

## Quick Connection Guide Using One Touch Dial

For details on operations, refer to the Operating Instructions.

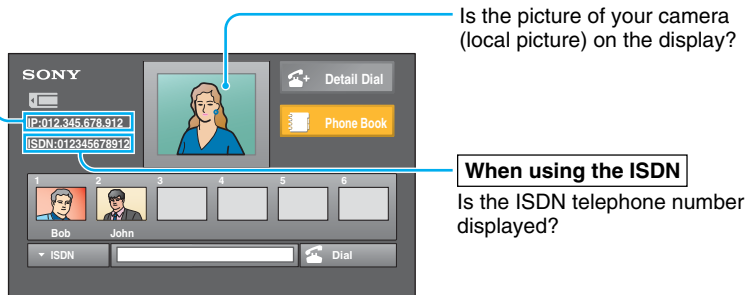
### To begin with

Turn on your Video Communication System, and check the following to ensure that connection is possible.

#### When using the LAN

Is the IP address displayed?

**Note:** Connection to a remote party is impossible if neither the IP address nor ISDN telephone number is displayed.



### Main indicators that appear during communication

	Controlling a remote camera
	Local microphone is cut off
	Sending a still image
	Receiving a still image
	Sending or receiving an image of a computer
	Receiving data of a whiteboard

### After checking...

### Let's connect

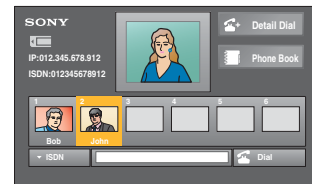
One Touch Dial buttons



↑/↓/←/→ (arrow) buttons

#### When six or less One Touch Dials are registered

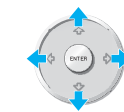
Press One Touch Dial button 1 to 6 to select the remote party.



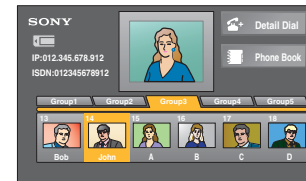
Press.

#### When seven or more One Touch Dials are registered

- 1 Press the ↑, ↓, ← or → to select the group.
- 2 Press One Touch Dial button 1 to 6 to select the remote party.

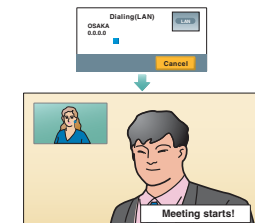


Select a group.



Press.

The system dials automatically, and establishes communication.



**If the remote party is not registered for One Touch Dial**  
Call a remote party manually, referring to the Operation Guide.  
**If communication cannot be established after a number of trials**  
The line registered for One Touch Dial may not be used. Consult your system administrator.

# Remote Control Guide: Operations available during communication

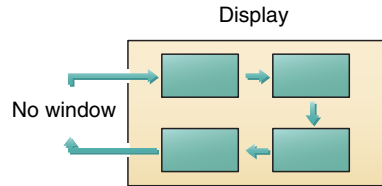
For details on operations, refer to the Operating Instructions.

## Ending the conference



## Changing the location of the window picture

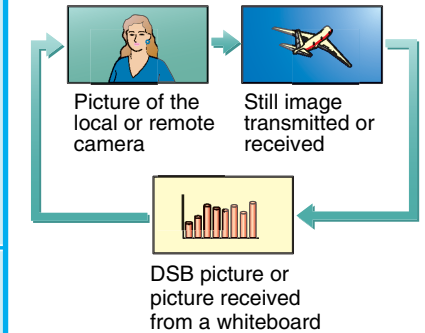
Each press of PinP changes the location of the window.



**Note:** The PinP feature is available during communication only.

## Switching the picture on the display

Each press of VIDEO CONF switches the picture.



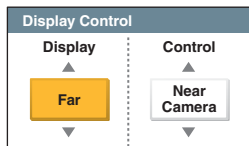
**Note:** You can switch among the available pictures only.

## Presetting the camera angle

Press button 1 to 6 quickly to move the camera to the preset position. Hold down button 1 to 6 to preset the current camera position.

**Note:** If you press button 1 to 6 quickly when there is no preset setting, the camera moves to the center position.

## Selecting the displayed picture and the camera

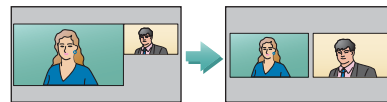


**Display:** Select the "Near" or "Far" picture to be displayed on the display.

**Control:** Select the "Near Camera" or "Far Camera" to be controlled.

## Monitoring the local and remote pictures simultaneously

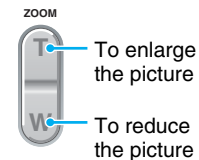
Press PandP once to enter the PandP mode, and press it again to change the sizes of the pictures.



**Note:** The PandP feature is available during communication only.

## Displaying the menu available during communication

## Adjusting the camera zoom



## Adjusting the sound of the remote party

