

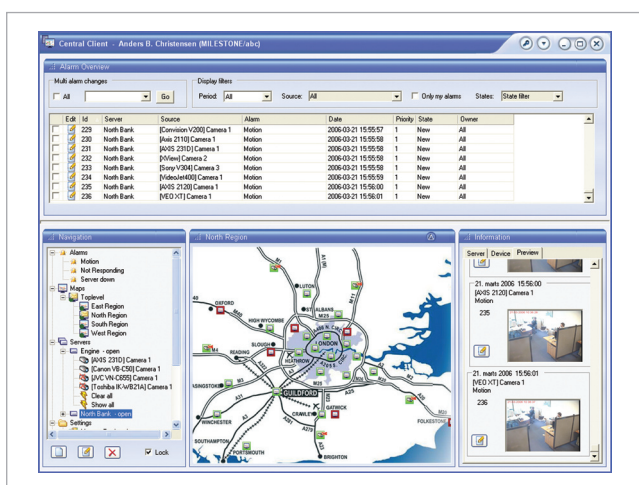
# Milestone XProtect Central

ensures optimum operation of your video surveillance installation by providing complete overview of operational status and alarms.

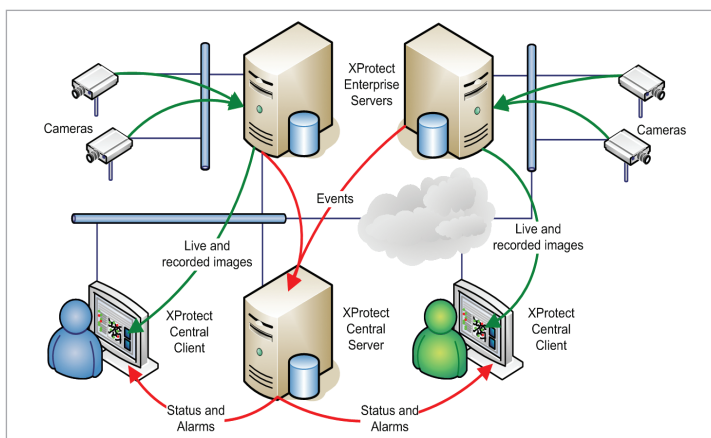
Milestone XProtect Central provides continuous monitoring of the operational status and event-triggered alarms from Milestone XProtect Enterprise servers, video surveillance cameras and external devices. This powerful solution gives operators on duty an instant overview of alarms and possible technical problems, allowing immediate visual verification and troubleshooting to resolve incidents fast.

## KEY BENEFITS:

- ◆ Centralized overview and control allows operators to manage even large video surveillance installations
- ◆ Hierarchical multi-level maps make it easy to navigate to and identify an incident's location and the system entities that are involved
- ◆ Visual and audible alerting supports busy environments like alarm centrals
- ◆ Instant access to servers and camera devices for visual verification allows quick response
- ◆ To spread the workload and provide backup capacity, alarm management can be assigned to multiple simultaneous operators with individual operator rights
- ◆ The broad range of events available for triggering alarms allows customization to fit the requirements of each organization
- ◆ Full alarm management provides surveillance operators with the option to acknowledge or reassign alarms or to 'snooze' specific incidents in case of scheduled maintenance
- ◆ Integration with third party access control or intruder devices via XProtect Enterprise gives inter-operability for the most comprehensive overview of your security installation



**XProtect Central provides overviews for visual verification of all locations; ideal for security installations with multi-sites or many buildings.**



**XProtect Central can integrate with security devices such as intruder or access alarms via camera relay inputs or through software integration. The XProtect Central server receives events and status information from the XProtect Enterprise installations and presents it for the operators on the XProtect Central client screens.**



# XProtect Central

combines alarm management with visual verification.

## PRODUCT FEATURES

### XPROTECT CENTRAL CLIENT

#### Interface and Navigation

- ◆ Graphical overview of operational status and alarms from XProtect Enterprise servers, network cameras, and external devices like PIR and access control units
- ◆ Easy navigation using a map-based, hierarchical structure with hyperlinks to other maps, servers and devices, or a tree view for accessing the same entities
- ◆ Visible and audible alarm and status indications

#### Alarm Management

- ◆ Detailed list with all incoming alarms, including filters on time period, alarm source, operator and alarm state
- ◆ Alarm states include: New, Open, Assigned, In progress, Processed, Resolved, Reject, Wait, On hold, Ignore, Closed and Auto Closed
- ◆ Alarm management includes reassignment to other operators, change of state for one/multiple/all alarms, change of alarm priority, entering incident-specific log information and suppression of alarms (snooze)
- ◆ Preview, view live or play back recorded images
- ◆ Auto close alarm on corresponding event
- ◆ Generate audit trail reports by incident

#### Operations Management

- ◆ Enable and disable monitoring of specific servers
- ◆ Acknowledge or suppress operational status messages for a period of time e.g. on scheduled maintenance
- ◆ Use multiple operators to handle the same installation

#### System Configuration

- ◆ Establish connection to servers by DNS name or IP address and use built-in accounts in XProtect Enterprise for server authentication
- ◆ Create multi-level maps with servers, cameras and external objects
- ◆ Trigger alarms by events from servers, cameras or external devices and pre-assign them with priority, operator, optional display of live video on remote monitor and link to related cameras
- ◆ Supported events like Archive Failure, Camera Deleted, External Event, Motion Detected, Camera or Server Not Responding/Responding, Running Out of Disk Space
- ◆ Import users and groups from Microsoft Active Directory for operator authentication and authorization
- ◆ Define role-based groups and assign operators to these to achieve different access rights by type or camera

### XPROTECT CENTRAL SERVER

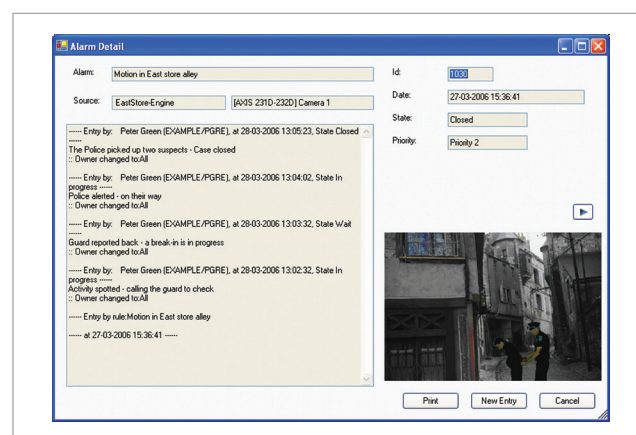
- ◆ Client/Server based architecture using HTTP and XML for data communication
- ◆ Support for multiple XProtect Enterprise Master and Slave servers on several remote locations
- ◆ Central logging of incoming alarms and system information in SQL database

## .NET ARCHITECTURE

The system architecture is .Net based with a server component accessed through a client application, all running on Microsoft Windows XP Professional or Windows Server 2003 servers.

## FLEXIBLE ACCESS RIGHTS

Each user can be assigned several roles; each role determines the access rights for cameras. This allows for infinite flexibility in your security system's administration and operation.



## MINIMUM SYSTEM REQUIREMENTS:

### XProtect Central Server:

**CPU:** Intel P4 or compatible, minimum 2.4 GHz  
**RAM:** Minimum 512 Mbyte  
**Network:** Ethernet (100 Mbit recommended)  
**OS:** Windows XP Professional or Windows Server 2003  
**Software:** .Net framework required

### XProtect Central Client:

**CPU:** Intel P4 or compatible, minimum 2.4 GHz  
**RAM:** Minimum 512 Mbyte  
**Network:** Ethernet (100 Mbit recommended)  
**Graphics Card:** AGP or PCI-Express, minimum 1280 x 1024  
**OS:** Windows XP Professional  
**Software:** .Net framework required