

See the Light. Get the Picture.™

---



**Extreme CCTV™**  
SURVEILLANCE SYSTEMS

## Extreme Overview

### Business

- Design, manufacture, and market advanced infrared illuminators and precision-engineered video surveillance products



### Markets

- Security providers for the following global markets:
  - ▶ Commercial
  - ▶ Industrial
  - ▶ Institutional
  - ▶ Military
  - ▶ Government
  - ▶ Residential

# Product Categories



Infrared Illuminators



License Plate Capture Cameras

Integrated Day-Night Cameras



Hi-Impact Domes

All-Weather / All-Environment

Explosion-Protected Cameras



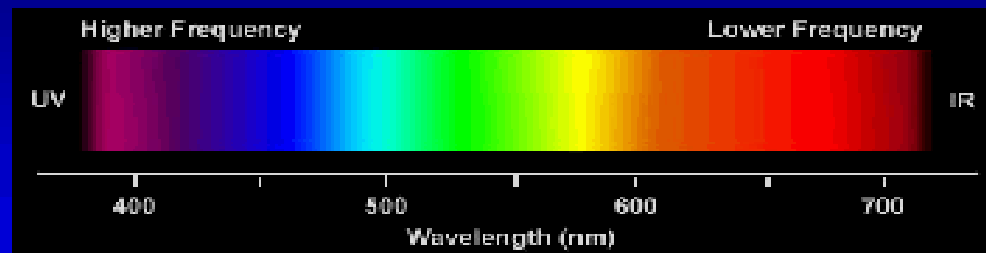
## The Basics of Infrared Technology

# Back to School

The Electromagnetic Spectrum

## What is Infrared?

- Infrared is a wavelength of light that the human eye cannot see
- Wavelengths of light **VISIBLE** to the human eye range from 400nm to 700nm



**“If there is no light, there can be no picture.”**



- NO motion to detect
- NO face to recognize
- NO scene to analyze
- NO intelligence.

## The Myth of Low Light Cameras

- All CCTV cameras need at least some light to deliver a picture
- No light = No picture
- Low light cameras are in the range of "1 lux" to "0.0001 lux"

## Low Lux Camera Image



- Moonlit scene without infrared illumination
- Noisy Picture
- Poor Quality
- No usable video evidence

## Why is IR so important?



- Same low lux camera utilizing infrared light
- High Signal/Low Noise Picture
- Usable video evidence!

## Choose Your Camera Carefully

The same scene can look completely different even if using cameras with close or identical specifications!



**Camera A**  
**Claimed Sensitivity = 0.0003 Lux**



**Camera B**  
**Claimed Sensitivity = 0.01 Lux**

To capture the best picture you must know the following...

How far?

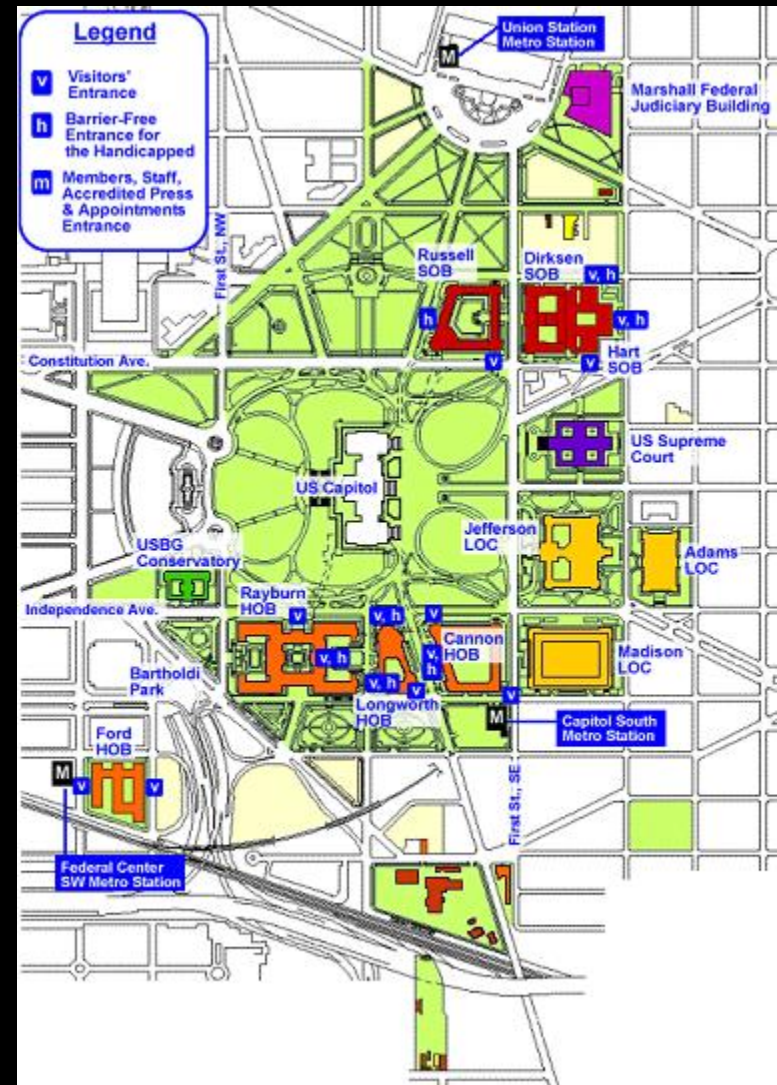
How wide?

Lighting on scene?

Environment at scene?

# US Capitol Complex

1. Irrefutable evidence
2. Unobtrusive lighting
3. License plate identification
4. Practical, Plug & Play solutions
5. Unique video requirements



# 1. Irrefutable evidence (Active vs. Thermal Infrared)

- Resolution is 500% better than passive systems
- Active-IR shots permissible for use as court evidence
- Active-IR can see through glass and read letters
- Thermal fails if there are no temp. differentials
- Thermal... Very expensive!



## 2. Unobtrusive lighting

- Offers discreet surveillance
- Maintains aesthetics of architectural design
- Eliminates need for high-powered visible lighting
- Cost-effective alternative











### 3. License plate identification

- REG cameras capture license plates consistently & reliably
- Day or night, fast-moving vehicles, headlights on
- More security projects require license plate reading capability



## REG License Plate Reader

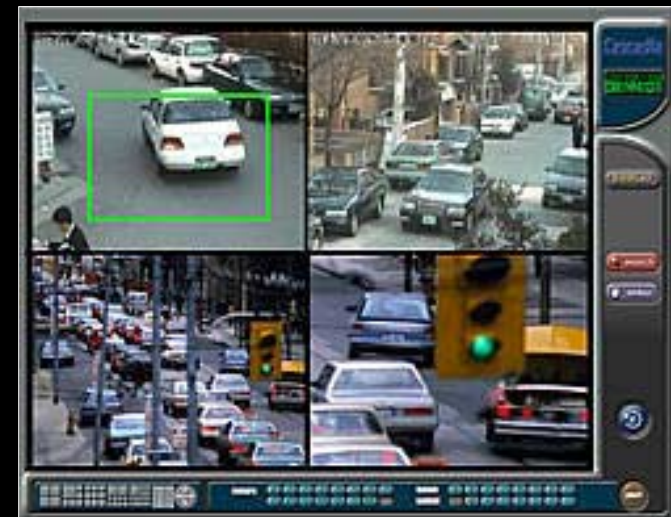
- State of the art license capture camera
- Operability in all lighting conditions
- Operability in all weather conditions
- High speed functionality to 120mph
- Recognized industry leader having been installed at over 10,000 security points worldwide



Please contact [Sales@ExtremeCCTV](mailto:Sales@ExtremeCCTV) for video footage

## REG and DVR Integration

- Today's standard DVRs are equipped with VMD
- Can be applied with REG license plate reader to consistently and reliably "detect and deliver" plate pictures to your digital storage system



# Automatic License Plate Recognition (ALPR)

- REG-ALERT Intelligent Software
- Converts plate image into text
- Stores plate data into searchable database
- Matches the data against a "hot-list" of license plates
- Sends real-time alarm on hits



**951CVT**



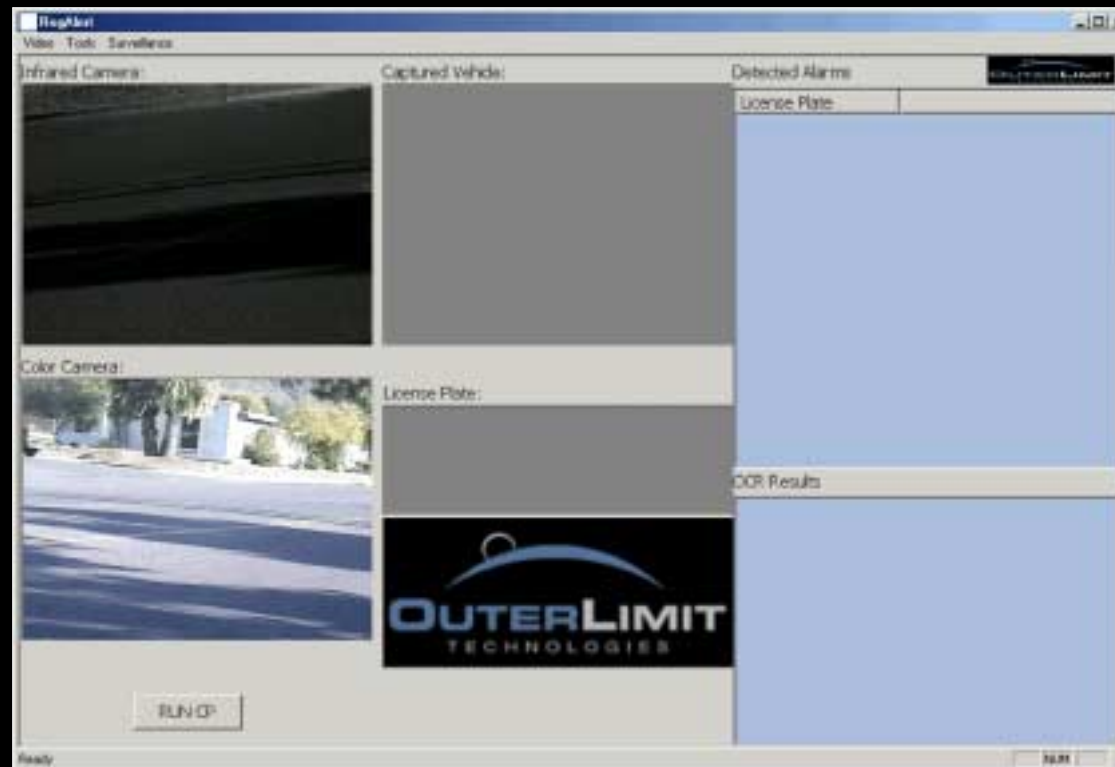
"Hot-List" Match



**ALERT!**

**REG-ALERT™**

# Automatic License Plate Recognition (ALPR)



Please contact [Sales@ExtremeCCTV](mailto:Sales@ExtremeCCTV) for video footage

**REG-ALERT™**

## 4. Practical, Plug & Play solutions

- Plug and Play Night Vision solution
- Camera, lens, illuminator in all-weather housing
- Integrate with PT motor for sweeping tours



## Integrated Day Night™ Cameras

- Designed for 24/7 surveillance
- Outperforms “low lux” cameras
- Takes the mystery out of choosing the correct camera and IR illuminator



## EX82DXL Dual Sensor IDN™ Camera

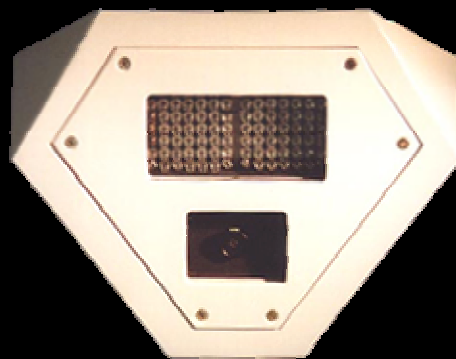
- 24/7 Surveillance
- Superb color by day, crisp infrared images by night
- No focus shift and instantaneous switch over from color to mono



Footage from EX82 on government building helped convict a Philadelphia murderer

## EX36 Corner Mount IDN™ Camera

- 45 deg tilt to view the ENTIRE room including underneath the camera itself
- Anchor-Free/Grip-Free face plate
- Tested by the US Federal Bureau of Prisons
- Sleep cells, Prison cells, Bank Vaults, Small rooms



## 4. Unique video requirements

- Bullet-proof camera housings
- Ruggedized pan-tilt-zoom speed dome
- Explosion-protected cameras and housings
- Long-range night vision



Dual Thermal/Optical camera

# ZX20/22 Ballistic Camera @ Marine Corps Base



Please contact [Sales@ExtremeCCTV](mailto:Sales@ExtremeCCTV) for video footage

# Moondance™ Ruggedized Speed Dome Camera



- Ruggedized stainless steel and aluminum PTZ domes
- Corrosion resistant, and submersible
- Day-night mechanical filter for superb day time and night time performance

# Moondance™ Ruggedized Speed Dome Camera

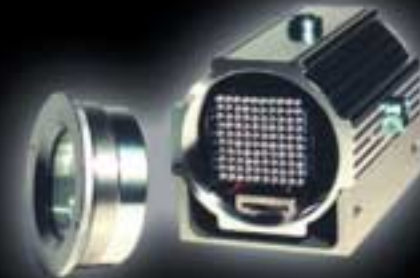


Please contact [Sales@ExtremeCCTV](mailto:Sales@ExtremeCCTV) for video footage

# Explosion-Protected Cameras and Housings



- Class I / Class II, Div. 1 and Div. 2 explosion-protected PTZ surveillance
- 24/7 anti-terrorist monitoring
- The industry's only certified explosion-protected night vision
- Effective risk mitigation and post-event evidentiary video



## Long Range Night Vision

- Day-time images up to 4 miles
- Active-Infrared For High Resolution Images at 3300ft
- 60 x Optical Zoom
- 12.5 > 750mm IR Optimized
- Turnkey PTZ Integration
  
- Port Surveillance
- Critical Infrastructure
- Pipelines
- Airport Perimeters



## GVS1000: Skiers @ ~4miles



Please contact [Sales@ExtremeCCTV](mailto:Sales@ExtremeCCTV) for video footage

## GVS1000: Bridge @ 2.5miles



Please contact [Sales@ExtremeCCTV](mailto:Sales@ExtremeCCTV) for video footage

# GVS1000: Boat @ 750m



Please contact [Sales@ExtremeCCTV](mailto:Sales@ExtremeCCTV) for video footage

# ATV2000i Laser Range Gated Infrared Technology



- ACTIVE IMAGING
- Through Total Obscurity
- Through rain, snow, and fog
- High Resolution
- Discrete
- Human 5 km
- Vehicle 10 km
- Search & Rescue >10 km
- Reserved for Government and Military applications only

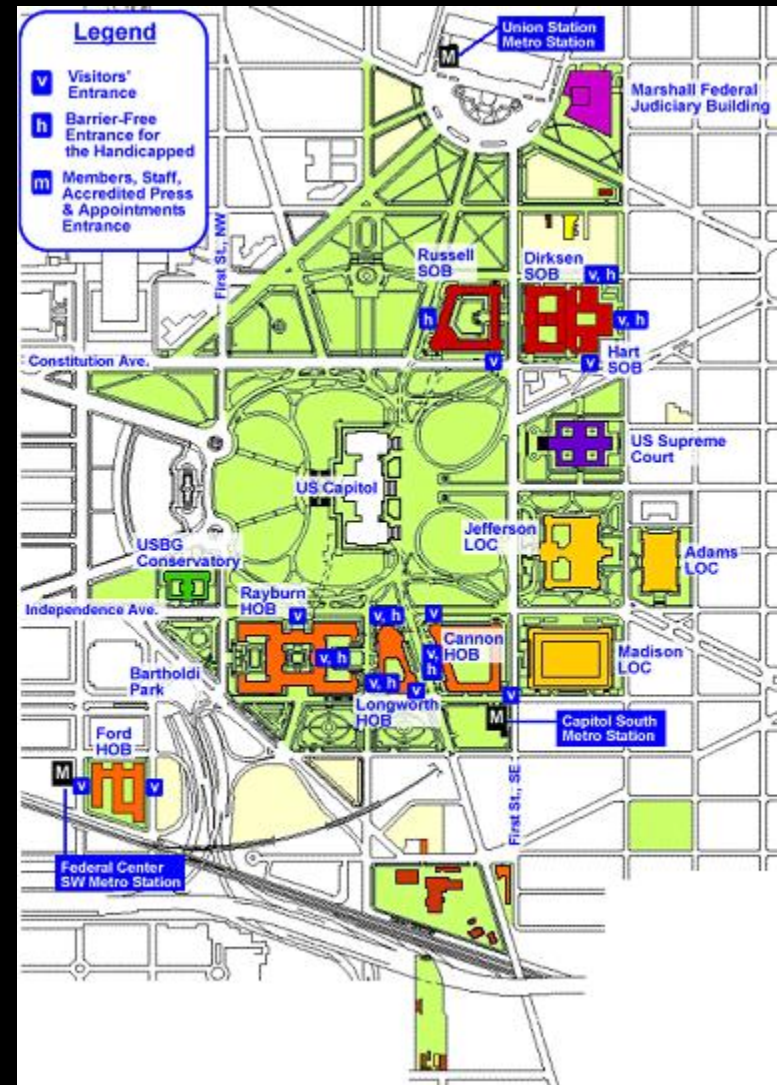
# ATV2000i: Truck identified at 800m through snowfall



Please contact [Sales@ExtremeCCTV](mailto:Sales@ExtremeCCTV) for video footage

## Recap: US Capital Complex

- Irrefutable evidence
- Unobtrusive lighting
- License plate identification
- Practical, Plug & Play solutions
- Unique video requirements



**Thank you!**

**David Piekowski**  
**Business Development Manager**  
[davidp@extremecctv.com](mailto:davidp@extremecctv.com)

**Extreme CCTV Inc.**  
**3021 Underhill Avenue**  
**Burnaby, B.C.**  
**V5A 3C2**  
**Tel: 1.888.409.2288**  
**Fax: 1.604.420.3300**

See the Light. Get the Picture.™

---



**Extreme CCTV™**  
SURVEILLANCE SYSTEMS