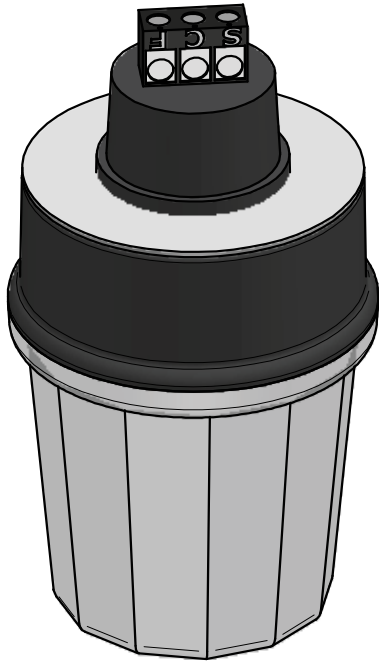




# Videolarm®



[www.videolarm.com](http://www.videolarm.com)

## **KFL24**

### Red Light Kit

Installation and Operation for the following models:

KFL24 Red flashing light kit for the FDW75 and RHW75 series dome housings, 35,000 hour LEDs

Before attempting to connect or operate this product, please read these instructions completely.

81-IN5398R0

## IMPORTANT SAFEGUARDS

- 1 Read Instructions - All the safety and operating instructions should be read before the unit is operated.
- 2 Retain Instructions - The safety and operating instructions should be retained for future reference.
- 3 Heed Warnings - All warnings on the unit and in the operating instructions should be adhered to.
- 4 Follow Instructions - All operating and user instructions should be followed.
- 5 Electrical Connections - Only a qualified electrician should make electrical connections..
- 6 Attachments - Do not use attachments not recommended by the product manufacturer as they may cause hazards.
- 7 Cable Runs - All cable runs must be within permissible distance
- 8 Mounting - This unit must be properly and securely mounted to a supporting structure capable of sustaining the weight of the unit.

Accordingly:

- a. The installation should be made by a qualified installer.
- b. The installation should be in compliance with local codes.
- c. Care should be exercised to select suitable hardware to install the unit, taking into account both the composition of the mounting surface and the weight of the unit.

Be sure to periodically examine the unit and the supporting structure to make sure that the integrity of the installation is intact. Failure to comply with the foregoing could result in the unit separating from the support structure and falling, with resultant damages or injury to anyone or anything struck by the falling unit.

## UNPACKING

Unpack carefully. Electronic components can be damaged if improperly handled or dropped. If an item appears to have been damaged in shipment, replace it properly in its carton and notify the shipper.

Be sure to save:

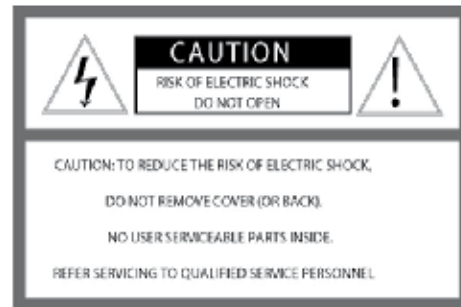
- 1 The shipping carton and packaging material. They are the safest material in which to make future shipments of the equipment.
- 2 These Installation and Operating Instructions.

## SERVICE

If technical support or service is needed, contact Sony at the following number:

TECHNICAL SUPPORT  
8:15AM to 7:30PM (Eastern Time)  
1-800-883-6817

## SAFETY PRECAUTIONS



The lightning flash with an arrowhead symbol, within an equilateral triangle, is intended to alert the user to the presence of non-insulated "dangerous voltage" within the product's enclosure that may be of sufficient magnitude to constitute a risk of electric shock to persons.

### Spanish

Este símbolo se piensa para alertar al usuario a la presencia del "voltaje peligroso no aislado" dentro del recinto de los productos que puede ser un riesgo del choque eléctrico.

### French

Ce symbole est prévu pour alerter l'utilisateur à la présence "de la tension dangereuse" non isolée dans la clôture de produits qui peut être un risque de choc électrique.

### German

Dieses Symbol soll den Benutzer zum Vorhandensein der nicht isolierten "Gefährdungsspannung" innerhalb der Produkteinschließung alarmieren, die eine Gefahr des elektrischen Schlages sein kann.

### Portuguese

Este símbolo é pretendido alertar o usuário à presença "da tensão perigosa não isolada" dentro do cerco dos produtos que pode ser um risco de choque elétrico.

### Italian

Questo simbolo è inteso per avvertire l'utente alla presenza "di tensione pericolosa" non isolata all'interno della recinzione dei prodotti che può essere un rischio di scossa elettrica.



The exclamation point within an equilateral triangle is intended to alert the user to presence of important operating and maintenance (servicing) instructions in the literature accompanying the appliance.

### Spanish

Este símbolo del punto del exclamation se piensa para alertar al usuario a la presencia de instrucciones importantes en la literatura que acompaña la aplicación.

### French

Ce symbole de point d'exclamation est prévu pour alerter l'utilisateur à la présence des instructions importantes dans la littérature accompagnant l'appareil.

### German

Dieses Ausruf Punktsymbol soll den Benutzer zum Vorhandensein der wichtigen Anweisungen in der Literatur alarmieren, die das Gerät begleitet.

### Portuguese

Este símbolo do ponto do exclamation é pretendido alertar o usuário à presença de instruções importantes na literatura que acompanha o dispositivo.

### Italian

Questo simbolo del punto del exclamation è inteso per avvertire l'utente alla presenza delle istruzioni importanti nella letteratura che accompagna l'apparecchio.



**LIMITED WARRANTY FOR VIDEOLARM INC. PRODUCTS**

VIDEOLARM INC. warrants this Product to be free from defects in material or workmanship, as follows:

PRODUCT CATEGORY	PARTS	LABOR
All Enclosures and Electronics	Three (3) Years	Three (3) Years
Pan/Tilts	Three (3) Years **6 months if used in autoscan	Three (3) Years **6 months if used in autoscan
Poles/PoleEvators	Three (3) Years	Three (3) Years
Warrior/Q-View/I.R. Illuminators	Five (5) Years	Five (5) Years
Controllers	Three (3) Years	Three (3) Years
Power Supplies	Three (3) Years	Three (3) Years
Accessory Brackets	Three (3) Years	Three (3) Years

During the labor warranty period, to repair the Product, Purchaser will either return the defective product, freight prepaid, or deliver it to Videolarm Inc. Decatur GA. The Product to be repaired is to be returned in either its original carton or a similar package affording an equal degree of protection with a RMA # (Return Materials Authorization number) displayed on the outer box or packing slip. To obtain a RMA# you must contact our Technical Support Team at 800.554.1124, extension 101. Videolarm will return the repaired Product freight prepaid to Purchaser. Videolarm is not obligated to provide Purchaser with a substitute unit during the warranty period or at any time. After the applicable warranty period, Purchaser must pay all labor and/or parts charges.

The limited warranty stated in these product instructions is subject to all of the following terms and conditions:

1. NOTIFICATION OF CLAIMS: WARRANTY SERVICE: If Purchaser believes that the Product is defective in material or workmanship, then written notice with an explanation of the claim shall be given promptly by Purchaser to Videolarm but all claims for warranty service must be made within the warranty period. If after investigation Videolarm determines that the reported problem was not covered by the warranty, Purchaser shall pay Videolarm for the cost of investigating the problem at its then prevailing per incident billable rate. No repair or replacement of any Product or part thereof shall extend the warranty period as to the entire Product. The specific warranty on the repaired part only shall be in effect for a period of ninety (90) days following the repair or replacement of that part or the remaining period of the Product parts warranty, whichever is greater.

2. EXCLUSIVE REMEDY: ACCEPTANCE: Purchaser's exclusive remedy and Videolarm's sole obligation is to supply (or pay for) all labor necessary to repair any Product found to be defective within the warranty period and to supply, at no extra charge, new or rebuilt replacements for defective parts.

3. EXCEPTIONS TO LIMITED WARRANTY: Videolarm shall have no liability or obligation to Purchaser with respect to any Product requiring service during the warranty period which is subjected to any of the following: abuse, improper use: negligence, accident, lightning damage or other acts of God (i.e., hurricanes, earthquakes), modification, failure of the end-user to follow the directions outlined in the product instructions, failure of the end-user to follow the maintenance procedures recommended by the International Security Industry Organization, written in product instructions, or recommended in the service manual for the Product. Furthermore, Videolarm shall have no liability where a schedule is specified for regular replacement or maintenance or cleaning of certain parts (based on usage) and the end-user has failed to follow such schedule; attempted repair by non-qualified personnel; operation of the Product outside of the published environmental and electrical parameters, or if such Product's original identification (trademark, serial number) markings have been defaced, altered, or removed. Videolarm excludes from warranty coverage Products sold AS IS and/or WITH ALL FAULTS and excludes used Products which have not been sold by Videolarm to the Purchaser. All software and accompanying documentation furnished with, or as part of the Product is furnished "AS IS" (i.e., without any warranty of any kind), except where expressly provided otherwise in any documentation or license agreement furnished with the Product.

4. PROOF OF PURCHASE: The Purchaser's dated bill of sale must be retained as evidence of the date of purchase and to establish warranty eligibility.

DISCLAIMER OF WARRANTY EXCEPT FOR THE FOREGOING WARRANTIES, VIDEOLARM HEREBY DISCLAIMS AND EXCLUDES ALL OTHER WARRANTIES, EXPRESS OR IMPLIED, INCLUDING, BUT NOT LIMITED TO ANY AND/OR ALL IMPLIED WARRANTIES OF MERCHANTABILITY, FITNESS FOR A PARTICULAR PURPOSE AND/OR ANY WARRANTY WITH REGARD TO ANY CLAIM OF INFRINGEMENT THAT MAY BE PROVIDED IN SECTION 2-312(3) OF THE UNIFORM COMMERCIAL CODE AND/OR IN ANY OTHER COMPARABLE STATE STATUTE. VIDEOLARM HEREBY DISCLAIMS ANY REPRESENTATIONS OR WARRANTY THAT THE PRODUCT IS COMPATIBLE WITH ANY COMBINATION OF NON-VIDEOLARM PRODUCTS OR NON-VIDEOLARM RECOMMENDED PRODUCTS PURCHASER CHOOSES TO CONNECT TO PRODUCT.

LIMITATION OF LIABILITY THE LIABILITY OF VIDEOLARM, IF ANY, AND PURCHASER'S SOLE AND EXCLUSIVE REMEDY FOR DAMAGES FOR ANY CLAIM OF ANY KIND WHATSOEVER, REGARDLESS OF THE LEGAL THEORY AND WHETHER ARISING IN TORT OR CONTRACT, SHALL NOT BE GREATER THAN THE ACTUAL PURCHASE PRICE OF



## Electrical Specifications

### KFL24 AC/DC LED ALARM LIGHT



English

Voltage: 12/24VDC or VAC  
Current: 395mA  
FPM: 60 flashes per minute



Español

Voltaje: 12/24VDC o del VAC  
Corriente de: 395mA  
FPM: 60 flashes por minuto



Français

Tension : 12/24VDC ou VCA  
Courant : 395mA  
FPM : 60 flashes par minute



Deutsch

Spannung: 12/24VDC oder VAC  
Strom: 395mA  
FPM: 60 Blitze pro Minute



Portuguese

Tensão: 12/24VDC ou VAC  
Corrente: 395mA  
FPM: 60 flashes por o minuto



Italiano

Tensione: 12/24VDC o VCA  
Corrente: 395mA  
FPM: 60 flash al minuto



## Product Highlights



English

-vibrant LED technology  
-2 operation modes- steady, on or flash  
-corrosion resistance  
-360 degree visibility  
-extended LED life- 35,000 hours  
-gasket and mount hardware included  
-UL recognition E121431  
-compatible with the RHW & FDW domes  
-12/24 VDC or VAC



Español

-tecnología vibrante del LED  
-2 modos de la operación constantemente, encendido o  
-resistencia a la corrosión de destello  
-vida ampliada visibilidad de 360 grados  
-LED 35.000 horas  
-hardware de junta y del montaje incluido  
-Reconocimiento E121431.  
-de la UL compatible con las bóvedas de RHW y de FDW.  
-12/24 VDC o VAC.



Français

-technologie du vibrant LED  
-modes d'opération de 2 doucement, dessus ou flash.  
-résistance de corrosion  
-visibilité de degré de 360  
-la vie de l'extended LED 35.000 heures  
-matériel de gasket et de bâti inclus  
-Identification E121431 d'UL  
-compatible avec les dômes de RHW et de FDW  
-12/24 volts continu ou VCA



Deutsch

-vibrant LED Technologie  
-2 Betrieb Modi stetig, an oder Blitz  
-corrosion Widerstand  
-360 Gradsicht  
-extended LED Leben 35.000 Stunden  
-gasket und Einfassung Kleinteile eingeschlossen  
-UL Anerkennung E121431  
-compatible mit den RHW u. FDW Hauben  
-12/24 VDC oder VAC.



Portuguese

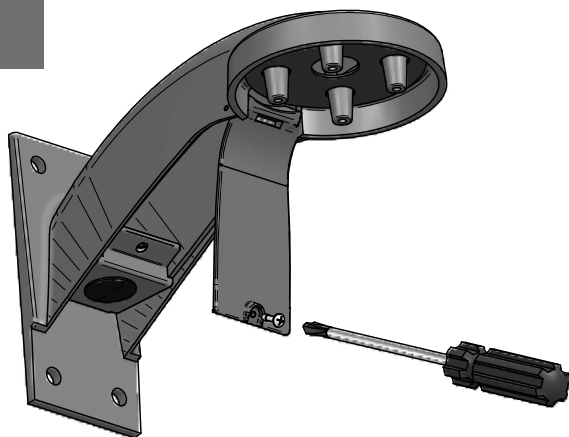
-tecnologia do diodo emissor de luz do vibrante  
-modalidades da operação do 2 firmemente, sobre ou flash  
-resistência do corrosion  
-visibilidade do grau do 360  
-vida do diodo emissor de luz do extended 35.000 horas  
-ferragem do gasket e da montagem incluída  
-Recognition E121431 do UL  
-compatible com as abóbadas de RHW & de FDW  
-12/24 VDC ou VAC



Italiano

-tecnologia del vibrante LED  
-modi di funzionamento del 2 con calma, sopra o flash  
-resistenza del corrosion  
-visibilità di grado del 360  
-vita del extended LED 35.000 ore  
-fissaggi del supporto e del gasket inclusi  
-Riconoscimento E121431 del UL  
-compatible con le cupole di FDW & di RHW  
-12/24 VCC o VCA.

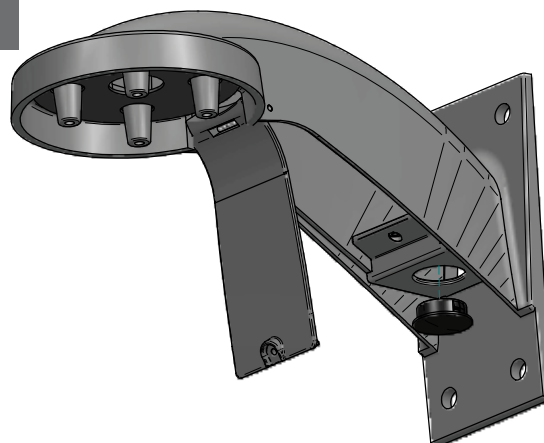
1



Open the door on the bottom of the wall mount bracket with a philips head screwdriver.

- Abra la puerta en el fondo del soporte del montaje de la pared con un destornillador principal de los philips.
- Ouvrez la porte sur le fond de la parenthèse de bâti de mur avec un tournevis principal de philips.
- Öffnen Sie die Tür auf der Unterseite des Wandeingassung Haltewinkels mit einem philips Hauptschraubenzieher.
- Abra a porta no fundo do suporte da montagem da parede com uma chave de fenda principal dos philips.
- Apra il portello sulla parte inferiore della staffa del supporto della parete con un cacciavite capo dei philips.

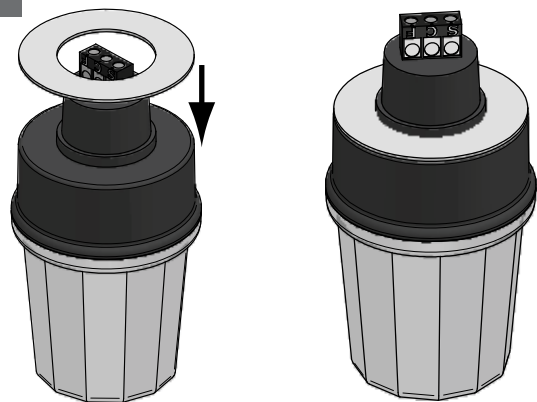
2



Remove the plug on the bottom of the wall mount simply by pushing it out with your finger.

- Quite el enchufe en el fondo del montaje de la pared simplemente empujándolo hacia fuera con su dedo.
- Enlevez la prise sur le fond du bâti de mur simplement en le poussant dehors avec votre doigt.
- Entfernen Sie den Stecker auf der Unterseite der Wandeingassung einfach, indem Sie heraus sie mit Ihrem Finger drücken.
- Remova o plugue no fundo da montagem da parede simplesmente empurrando a para fora com seu dedo.
- Rimuova semplicemente la spina sulla parte inferiore del supporto della parete spingendolo fuori con la vostra barretta.

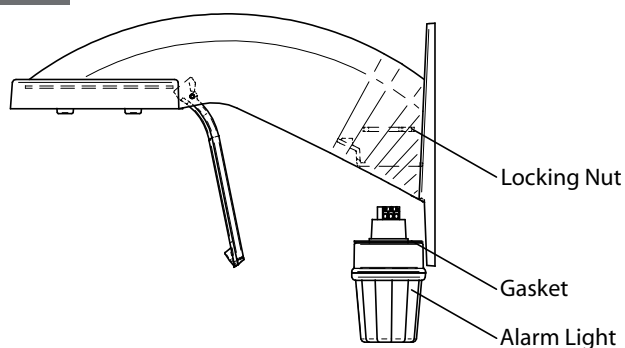
3



Place the gasket snugly at the base of the threads on the alarm light as shown.

- Coloque la junta comodamente en la base de los hilos de rosca en la luz del alarmer según lo demostrado.
- Placez la garniture confortablement à la base des fils sur la lumière d'alarme comme montrée.
- Setzen Sie die Dichtung gemütlich an der Unterseite der Gewinde auf das Warnung Licht, wie gezeigt.
- Coloque a gaxeta confortavelmente na base das linhas na luz do alarme como mostrada.
- Disponga comodamente la guarnizione alla base dei filetti sulla luce dell'allarme come indicata.

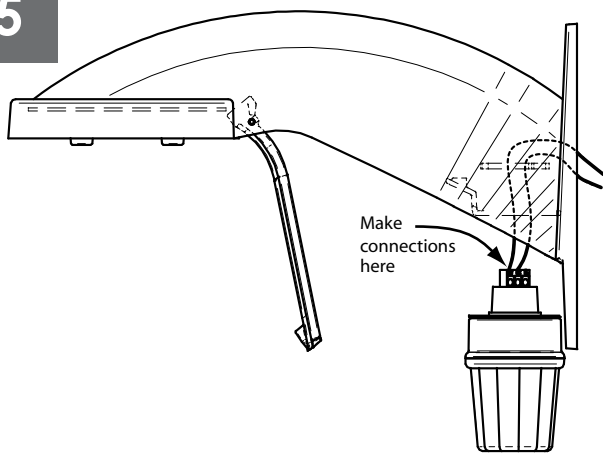
4



Orient the parts as shown above in order to assemble the light to the wall mount.

- Oriente las piezas según lo demostrado arriba para montar la luz el montaje de la pared.
- Orientez les pièces comme montré ci-dessus afin d'assembler la lumière au bâti de mur.
- Orientieren Sie die Teile, wie oben gezeigt, um das Licht zur Wandeingassung zusammenzubauen.
- Oriente as peças como mostrado acima a fim montar a luz à montagem da parede.
- Orienti le parti come indicato sopra per montare la luce al supporto della parete.

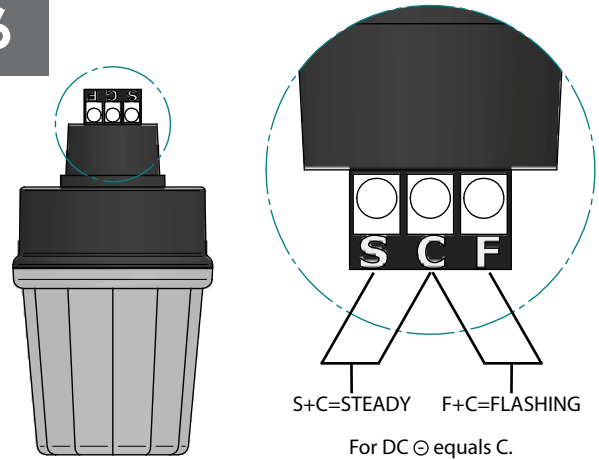
5



Run wires through the locking nut and hole in the bottom of the wall mount and make the connections.

- Los alambres del funcionamiento a través de la tuerca y del agujero de fijación en el fondo de la pared montan y hacen las conexiones.
- Les fils de course par l'écrou et le trou de fermeture au fond du mur montent et établissent les rapports.
- Durchlaufleitungen durch die Sicherungsmutter und die Bohrung in der Unterseite der Wand bringen an und stellen die Beziehungen her.
- Os fios do funcionamento através da porca travando e do furo no fundo da parede montam e fazem as conexões.
- I legare di funzionamento attraverso il dado ed il foro di bloccaggio nella parte inferiore della parete montano e fanno i collegamenti.

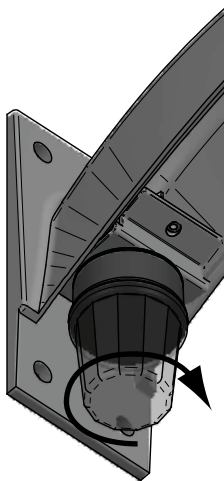
6



Connect the appropriate wires according to the two wire hookup that you desire.

- Conecte los alambres apropiados según la transmisión en circuito de dos alambres que usted desea.
- Reliez les fils appropriés selon la conjugaison de deux fils que vous désirez.
- Schließen Sie die passenden Leitungen entsprechend der zwei Leitung gemeinsamen Ausstrahlung an, die Sie wünschen.
- Conecte os fios apropriados de acordo com a conexão de dois fios que você deseja.
- Collegli i legare adatti secondo il collegamento dei due legare che volete.

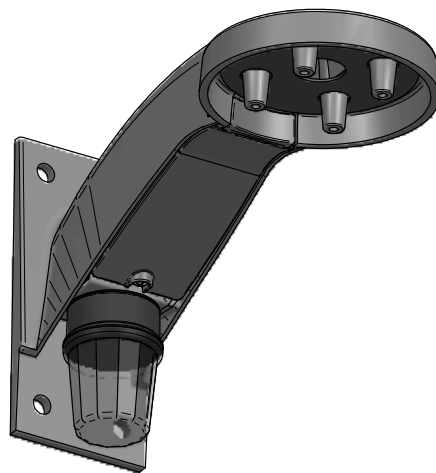
7



Tighten the locking nut snugly to the alarm light by holding the nut in place and turning the light clockwise.

- Apriete la tuerca de fijación comodamente a la luz del alarmer sosteniendo la tuerca en lugar y dando vuelta a la luz a la derecha.
- Serrez l'écrou de fermeture confortablement à la lumière d'alarme en tenant l'écrou en place et en tournant la lumière dans le sens des aiguilles d'une montre.
- Ziehen Sie die Sicherungsmutter gemütlich zum Warnung Licht fest, indem Sie nach rechts die Nuß im Platz halten und das Licht drehen.
- Aperte a porca travando confortavelmente à luz do alarme prendendo a porca no lugar e girando a luz no sentido horário.
- Stringa comodamente di bloccaggio girare e sul posto il dado dalla tenuta alla luce dell'allarme il dado la luce in senso orario.

8



Complete the assembly by closing the door on the bottom of the wall mount and tightening the screw.

- Termine a asamblea cerrando la puerta en el fondo del montaje de la pared y apretando el tornillo.
- Accomplissez l'assemblée par fermeture la porte sur le fond du bâti et de serrer de mur la vis.
- Führen Sie die Versammlung durch, indem Sie die Tür auf der Unterseite der Wandeinfassung schließen und die Schraube festziehen.
- Termine o conjunto fechando a porta no fundo da montagem da parede e apertando o parafuso.
- Completi il complessivo chiudendo il portello sulla parte inferiore del supporto della parete e stringendo la vite.