

AI Controlled Lenses

F1.5/10-300mm AI Motorzoom Lens,
1/2", C Mount



EDP-No.: 40235

A10Z30NDAI

- 30x High-Speed Zoom Lens
- Suitable for 1/2" and 1/3" Colour and B&W Cameras
- C Mount
- DC Controlled Iris
- Without Built-in Auto Iris Amplifier
- High Standard of Optical and Mechanical Quality
- Quality Motors on Focus and Zoom
- Adjustable Slip-ring Mount for Cable Positioning

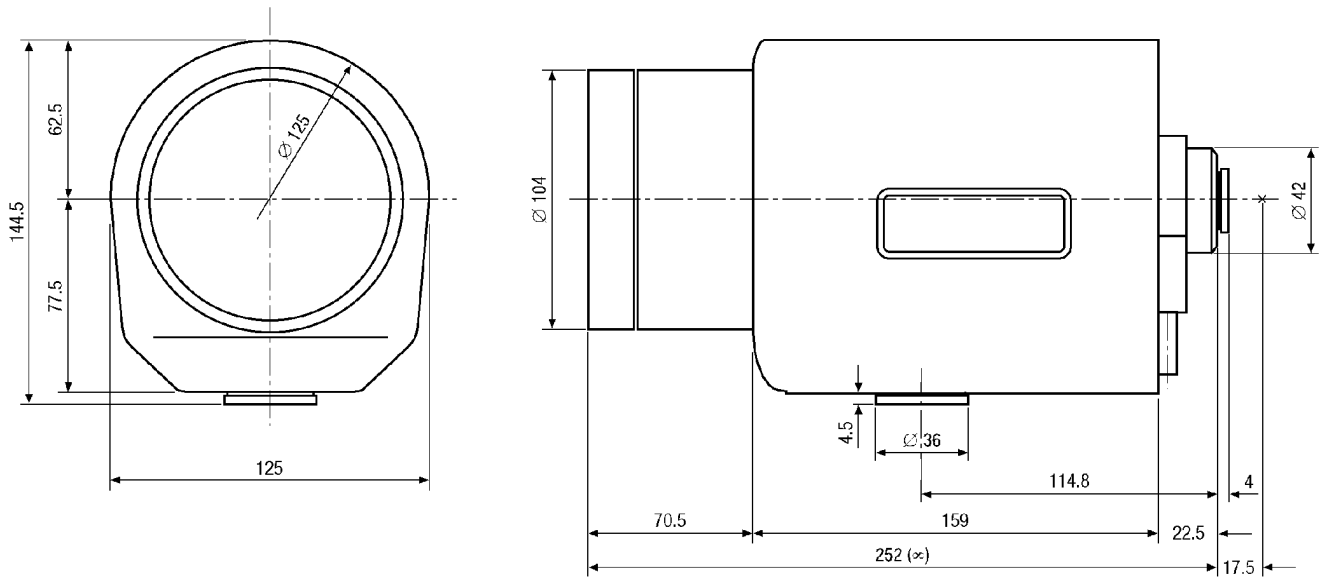


Specifications:

Focal length (f)	10-300 mm
Aperture range (F)	F1.5-F560
Lens mount	C
Nominal format size	1/2"
Flange focal length	17.526 mm
Horizontal angle of view at nominal format size	35.5°-1.25°
Minimum object distance (M.O.D.)	2.2 m
Screw-in depth	4.0 mm
Filter screw size	M100x1 mm
Slip-ring mount	340°-360° Variable adjustment range
Iris control system	Galvanometer
Supply voltage	8.5-16 VDC
Input signal range	0.5 to 1.0 Vp-p (C)CVS
Response time	Approx. 4-5 sec. (at 8 V)
Accuracy at +20°C	+/-15 % at video signal level
Supply voltage range	8 VDC +/-20%
Max. current consumption/motor (run)	60-80 mA
Max. current consumption	40 mA
Cable length	>50 cm

A10Z30NDAI

Motor clutch on focus/zoom	Yes
Potentiometer on focus and zoom	-
Dimensions (HxWxD)	See drawing
Temperature range	-10°C to +50°C
Weight	3170 g



Maße/Dimensions: mm

Videor Technical E.Hartig GmbH • Carl-Zeiss-Straße 37 • 63322 Rödermark
 Tel: +49 (0) 60 74 / 888 - 0 • Fax: +49 (0) 60 74 / 888 - 100 • e-mail: info@videortechnical.com •
www.videortechnical.com