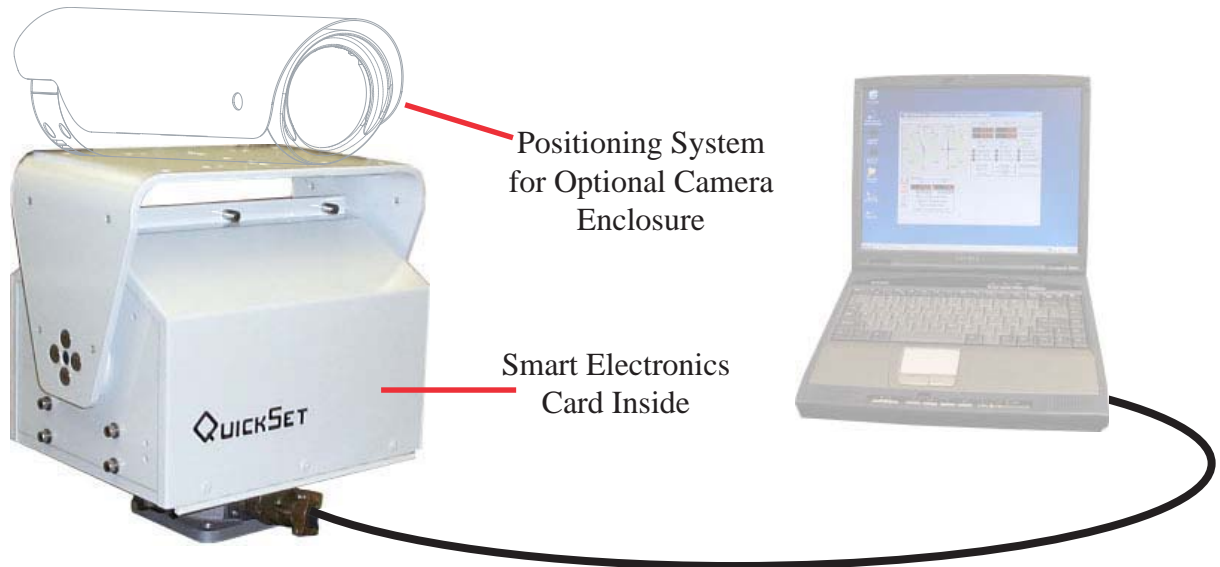


Models Covered: QPT-90IC & QPT-130IC

Pan & Tilt Positioning Systems **with Integrated Microprocessor Control**



Key Features:

- Available in 12 or 24 VDC models, power supply optional
- Weather resistant
- Repeatability to 0.25° (pots) or 0.1° (resolvers)
- Comprehensive Protocol Command set allows complete operation control and configuration via any controller compatible with EIA **RS232** or **RS422** communication. Includes auto-baud detection & 6 foot test cable.

Set-up commands include:

- Electronic limit of motion for both pan and tilt.
- Setting of minimum and maximum speeds
- Establishing 32 preset locations, including "home position"
- "Tour" feature allows construction of up to 63 steps of the preset positions continuously cycling with variable dwell times between them. Three tours may be stored in on board memory.
- Setting normal/reverse mode of movement and position feedback.
- Alignment to local or global coordinates.
- Includes test/operational software (Requires Windows 95 SR2, 98, ME or XP; not compatible with Windows NT or 2000)

Test software features include:

- Access to all setup parameters.
- Virtual joystick for jog position
- Visual analog and digital position indicators, plus destination readouts
- "Move To" feature via absolute direct entry, delta direct entry, and "move to home"
- Set up and access of tour feature.
- Diagnostic communication and fault indicators
- Protocol analyzer
- Move monitor allows logging of positions acquired

For Those Who Demand Durability!

SPECIFICATIONS OF QPT-90/130IC

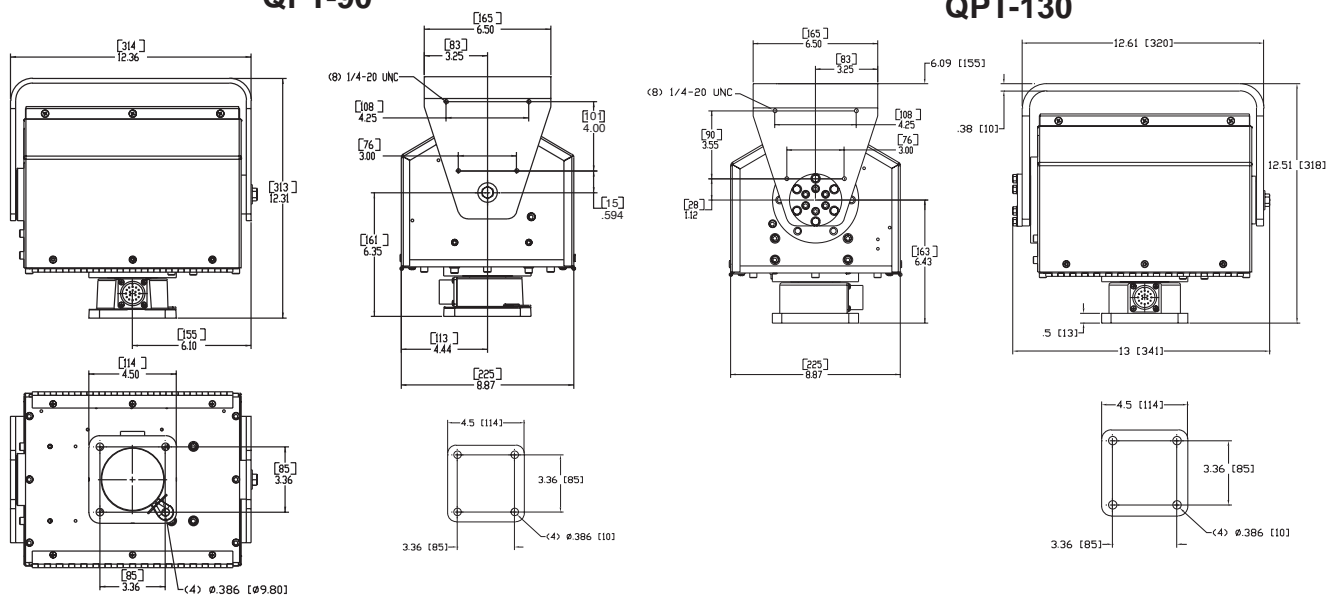
STANDARD BASE MODELS QPT-90/130IC (Integrated Control)

	7-45300	7-45310	7-45510	7-55510
MODEL	QPT 90	QPT 90	QPT130/150	QPT130/150
VOLTAGE	12	24	24	24
LOAD CAPACITY	UP TO 90 POUNDS*	UP TO 90 POUNDS*	UP TO 130/150 POUNDS*	UP TO 130/150 POUNDS*
PAN RANGE	435 DEG	435 DEG	435 DEG	435 DEG
PAN SPEED	.5-10 DEG/SEC	.3-8 DEG/SEC	.3-8 DEG/SEC	.3-8 DEG/SEC
TILT RANGE	180 DEG (+/- 90 DEG)			
TILT SPEED	.1-3 DEG/SEC	.1-4.5 DEG/SEC	.1-4.5 DEG/SEC	.1-4.5 DEG/SEC
MOTOR TYPE	PERMANENT MAGNET			
CONNECTOR	MIL SPEC 17 PIN (MATING CONNECTOR SUPPLIED)			
WEIGHT	37 POUNDS	37 POUNDS	44 POUNDS	44 POUNDS
DRIVE TRAIN	STEEL GEAR AND WORM, BALL AND TAPERED ROLLER BEARING			
MICROPROCESSOR CONTROL	INTERNAL			
LIMIT SWITCHES	INTERNALLY ADJUSTABLE "HARD LIMITS", ELECTRONICALLY ADJUSTABLE "SOFT LIMITS"			
BACKLASH	ADJUSTABLE			
REPEATABILITY	.25 DEG	.25 DEG	.25 DEG	.1 DEG
MATERIAL	HOUSING-ALUMINUM 6061-T6, HARDWARE STAINLESS STEEL			
EXTERIOR COLOR	WHITE (DUPONT 326162A, FORD PFWS 9) POWDERCOAT, CUSTOM COLORS/PRIVATE LABELING UPON REQUEST			
ENCLOSURE	ENVIRONMENTALLY GASKETED AND SEALED, QPT-130 INCLUDES STAINLESS STEEL BASE			
OPERATING TEMP. RANGE	-5 DEG F TO +131 DEG F (-15 DEG C TO +55 DEG C) WITHOUT HEATER			
	-22 DEG F TO +131 DEG F (-30 DEG C TO +55 DEG C) WITH HEATER			
HEATER	STANDARD			
POSITION FEEDBACK	POTENTIOMETER	POTENTIOMETER	POTENTIOMETER	RESOLVER

* Center of gravity located at table top.

QPT-90

QPT-130



Dimensions are in inches [mm]