



The QPT-130 unit is designed for Heavy Duty mobile and fixed operation in the most hostile environments.

It features all-metal gearing for improved durability, aluminum housing with a powder coat finish (for white & black models), and improved corrosion resistance.

The unit has single-bolt cover access for internal limit switch adjustments. Position feedback and an optional heater is available on most models.



Key Features

Designed for Heavy Duty, Off Road Operation

435° pan rotation

150lbs. (68 kg) load capacity mobile operation

All Metal Gearing

Aluminum housing with powder coat finish

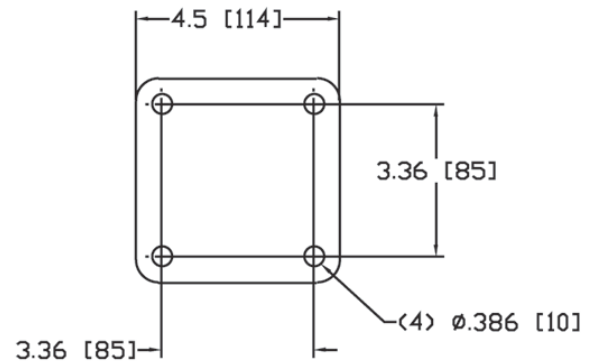
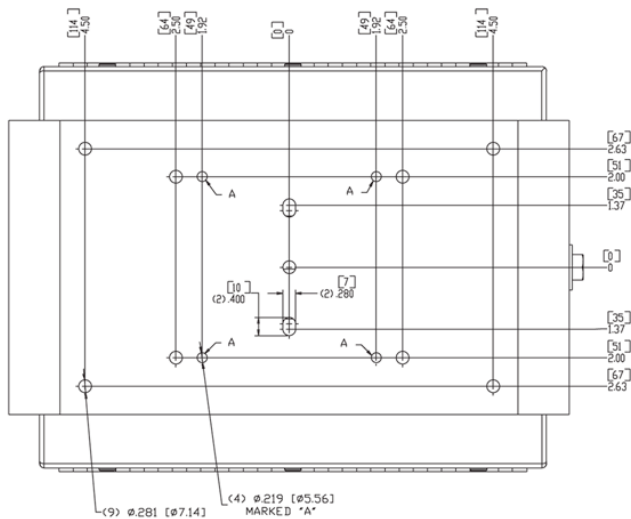
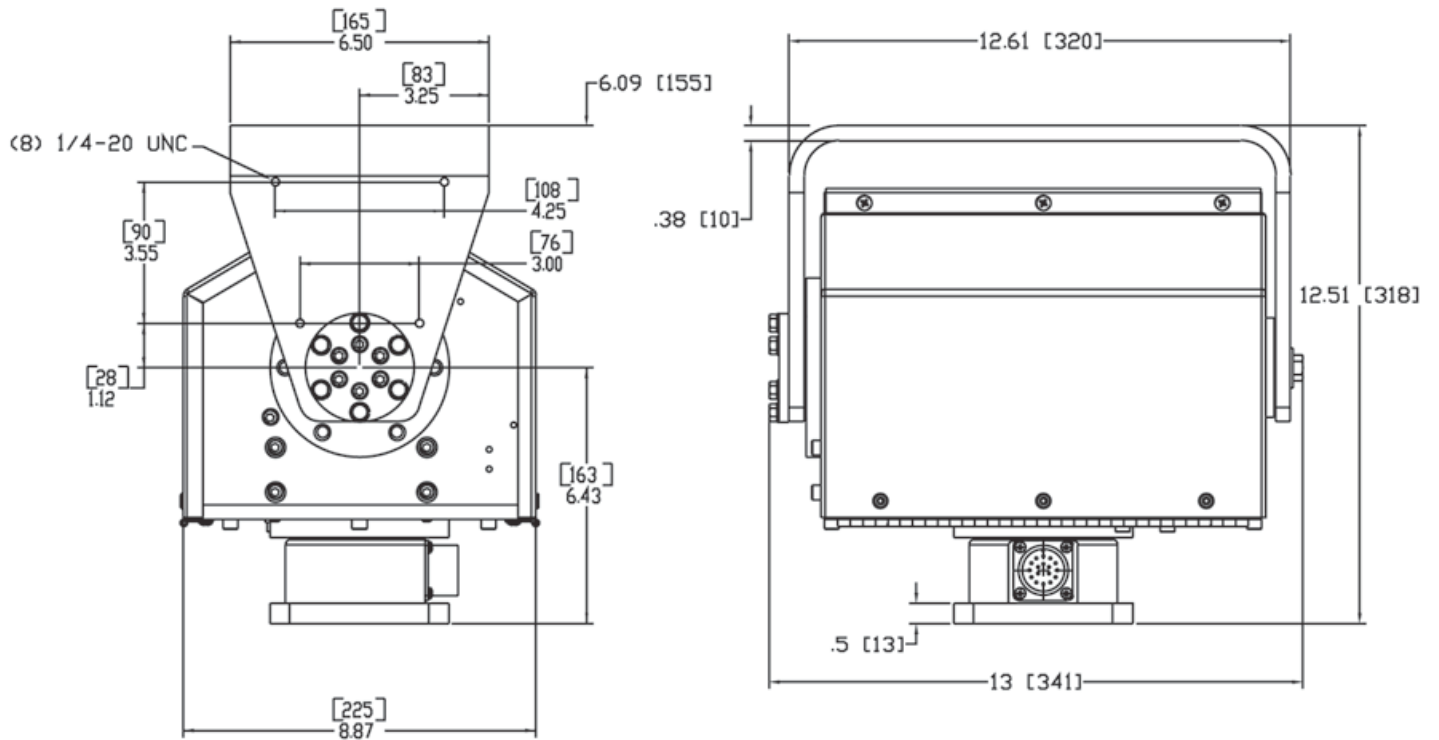
Stainless steel base & external hardware

Heater included

Potentiometers included

Key Features continued

Voltage:	115 VDC
Load Capacity:	150 lbs. (68 kg) fixed installation
Duty Cycle:	Intermittent
Pan Range:	435° (±217.5°)
Pan Speed:	0.5° - 8.5°/ sec.
Pan Torque:	50 ft.-lbs
Pan Motor Current:	0.3 amp
Tilt Range:	180° (±90°)
Tilt Speed:	0.1° - 3°/ sec.
Tilt Torque:	90 ft.-lbs
Tilt Motor Current:	0.4 amp
Motor Type:	Permanent Magnet
Connector (mating connector included):	17 pin
Weight:	44 lbs (20 kg)
Dimensions:	12.51"H x 12.61"W x 8.87"D (318mmH x 320mmW x 225mmD)
Drivetrain:	Steel gear & worm, ball & tapered roller bearings, steel chain
Limit Switches:	Internal, adjustable
Backlash:	Adjustable to 0
Repeatability:	0.25° with potentiometers
Material:	Housing - Aluminum 6061 - T6, External Hardware & Covers - Stainless Steel
Exterior Color/Finish:	Dupont 326162A, Ford PFWS9 Powder Coated (custom colors/private labeling upon request)
Environmental Enclosure:	Gasketed & sealed to withstand water & dust penetration
Heater:	120 volt, 450 watt
Operating Temperature:	+5°F to +131°F (-15°C to +55°C) (without heater operating) -22°F to +131°F (-30°C to +55°C) (with heater operating)



Dimensions are in inches[mm]