

**PT1250DC Series
Heavy Duty Pan/Tilt**

**Installation/
Operation Manual**

C373M-F (10/98)

CONTENTS

Section	Page
1.0 GENERAL	3
1.1 IMPORTANT SAFEGUARDS AND WARNINGS	3
2.0 DESCRIPTION	4
2.1 MODELS	4
2.2 RATINGS	4
3.0 INSTALLATION	5
3.1 MOUNTING	5
3.2 CAMERA/ENCLOSURE MOUNTING	5
3.3 WIRING	5
3.3.1 Mating Connector Assembly	7
3.4 LIMIT STOP ADJUSTMENTS	10
4.0 OPERATION	11
5.0 TROUBLESHOOTING	12
5.1 SERVICE MANUAL	12
6.0 MAINTENANCE	13
6.1 TIGHTENING DRIVE CHAINS	13
6.2 CHAIN DRIVE LUBRICATION	13
7.0 SPECIFICATIONS	14
8.0 WARRANTY AND RETURN INFORMATION	16

LIST OF ILLUSTRATIONS

Figure	Page
1 Sealant Locations	5
2 Connector Assembly	7
3 PT1250DC Wiring Diagram	8
4 PT1250DC/PP Wiring Diagram	9
5 Limit Stops	10
6 Servicing the Pan/Tilt	13
7 PT1250DC Dimension Drawing	15

LIST OF TABLES

Table	Page
A Maximum Cable Distances	6

REVISION HISTORY

Manual #	Date	Comments
C373M-F	10/98	Changed manual to new format. Added ratings. Revised installation instructions. Moved exploded assembly diagram and parts lists to maintenance/service manual. Revised wiring diagrams to reflect new motor.

1.0 GENERAL

1.1 IMPORTANT SAFEGUARDS AND WARNINGS

Prior to installation and use of this product, the following WARNINGS should be observed.

1. Installation and servicing should only be done by qualified service personnel and conform to all local codes.
2. Unless the unit is specifically marked as a NEMA Type 3, 3R, 3S, 4, 4X, 6, or 6P enclosure, it is designed for indoor use only and it must not be installed where exposed to rain and moisture.
3. The weight of the camera, lens, and enclosure shall not exceed 100 lb (45.36 kg), subject to specific pan/tilt unit.
4. Only use replacement parts recommended by Pelco.
5. After replacement/repair of this unit's electrical components, conduct a resistance measurement between line and exposed parts to verify the exposed parts have not been connected to line circuitry.
6. The installation method and materials should be capable of supporting four times the weight of the enclosure, pan/tilt, camera and lens combination.

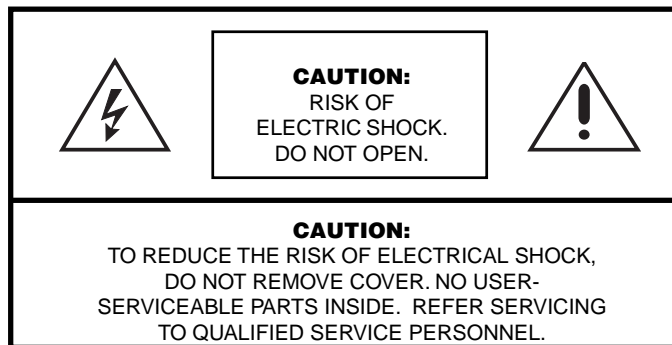
The product and/or manual may bear the following marks:



This symbol indicates that dangerous voltage constituting a risk of electric shock is present within this unit.



This symbol indicates that there are important operating and maintenance instructions in the literature accompanying this unit.



**Please thoroughly familiarize yourself with the information
in this manual prior to installation and operation.**

2.0 DESCRIPTION

The PT1250DC is a heavy duty pan/tilt ruggedly constructed to comfortably operate with loads up to 100 lbs (45.36 kg). High torque D.C. motors with heavy duty adjustable worm gear final drive assemblies eliminate backlash and drifting. Equally important to the operator is dynamic braking for instantaneous stopping.

Extremely serviceable, the PT1250DC features access to all electrical and mechanical components.

The PT1250DC is manufactured from cast and plate aluminum with all internal parts corrosion protected steel or aluminum. Limit stops are externally adjustable for ease of installation.

2.1 MODELS

PT1250DC	Heavy duty, indoor/outdoor pan/tilt, 115 VDC
PT1250DC/FG	Same as PT1250DC except supplied with special high-speed gears (12°/6° per second pan/tilt speed). Reduces total load rating to 50lb (22.68)
PT1250DC/HB	Same as PT1250DC except supplied with spot heater in base, blanket heater in cover, 120 VAC (230 watts total). Allows operation to -50°F (-46°C)
PT1250DC/PP	Same as PT1250DC except supplied with position feedback modification. Requires preset control or control with AZL option (panel readout meters)
PT1250DC/RAD	Same as PT1250DC except supplied with radiation resistant wiring and white epoxy paint. Low level radiation resistant up to 10 ⁶ rads

2.2 RATINGS

- NEMA Type 3R
- IP 32

3.0 INSTALLATION



CAUTION: Pan/tilts in the PT1250DC Series are designed for upright or inverted operation and should never be mounted horizontally.

Pan/tilts in the PT1250DC Series are designed to mount onto a horizontal surface in the upright or inverted position.

In order to ensure proper wiring and system operation of all components, it is recommended that you test the pan/tilt and the associated control equipment in your facility before field installation. Refer to Sections 3.3 through 3.4.

3.1 MOUNTING

NOTE: When mounting the pan/tilt outdoors in the inverted position (base up), RTV silicone sealant, such as Dow Corning Type 732 or equivalent, should be applied to the areas indicated in Figure 1.

Attach the pan/tilt unit to a mount, following the instructions that accompany the mount. To ensure maximum pan travel, mount the pan/tilt so that the fixed limit stop is directly opposite the center of the intended viewing area.

Make sure the mounting surface and the mounting method is strong enough to support four times the combined weight of the pan/tilt, enclosure, camera and lens.

3.2 CAMERA/ENCLOSURE MOUNTING

Attach the enclosure, camera and lens to the pan/tilt unit with 1/4-20 hardware (not supplied). The enclosure, camera and lens must be correctly mounted and balanced on the tilt table for proper operation.

3.3 WIRING

Cable distances for pan and tilt motors should not exceed the distances specified in Table A. Cable fabrication must be in accordance with Section 3.3.1, Mating Connector Assembly. The following are some recommended common installation practices.

1. Always use jacketed stranded multi-conductor interconnecting cable between the control and the pan/tilt unit, with additional conductors than needed for future servicing and or additions.
2. Always use color-coded conductors for ease of wiring and to identify functions at a later date.
3. Keep a wiring diagram with the system for later use and reference.

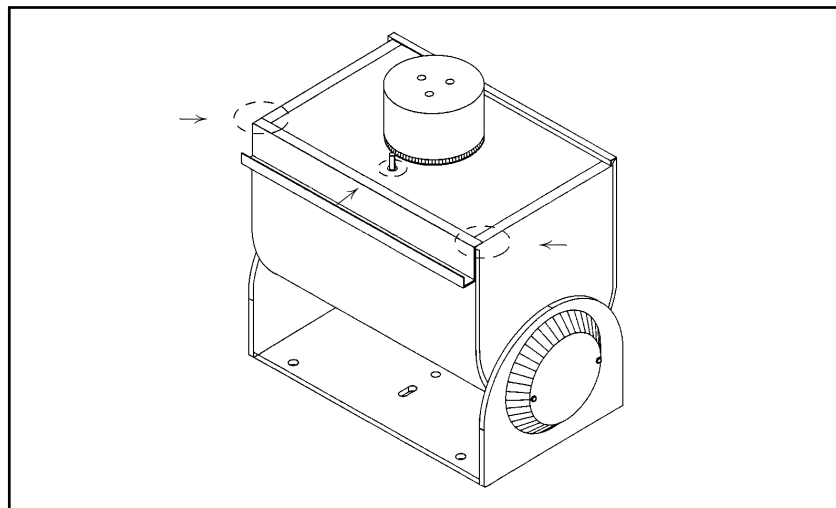


Figure 1 . Sealant Locations

Table A . Maximum Cable Distances

Wire Size	Maximum Distance
20 AWG	635 feet (193.55 m)
18 AWG	1,015 feet (309.37 m)
16 AWG	1,610 feet (490.73 m)

Distances are calculated with both motors (pan/tilt) running and assuming a 10% voltage drop in cable.

3.3.1 Mating Connector Assembly

NOTE: Contacts cannot be removed from the connector without the use of the appropriate AMP extraction tool (ZT305183), which is available from Pelco.

NOTE: When a pan/tilt is mounted in the inverted position, the LEFT/RIGHT and UP/DOWN functions are reversed during operation. To correct this problem, reverse the LEFT/RIGHT functions in the control cable (pins 3 and 7) at the pan/tilt or control and the UP/DOWN functions (pins 5 and 6) at the pan/tilt or control.

To assemble the mating connector, refer to Figure 2 and perform the following steps.

The instructions that follow apply to all AMP style connectors regardless of pin size or pin number.

1. Slide the connector clamp assembly over the conductor cable. If the diameter of the conductor cable is such that the rubber boot will slide over it easily, slide the rubber boot onto the conductor cable at this time. If not, discard the rubber boot.
2. Refer to Detail A in Figure 2. Prepare the wires from the conductor cable as follows:
 - a. Strip at least 1-inch (2.54 cm) from the cable jacket to expose the wires. You may need to strip more from the cable jacket if you have more wires.
 - b. Strip 1/8-inch (0.125 cm) from each wire.
 - c. Using an AMP style crimper, crimp the wires and their insulation to the connector pins.
3. Slide the connector pins into the appropriate holes in the connector body until they snap into place. Refer to detail B in Figure 2 and to Figure 3 or 4 for correct pin arrangement, depending on model and options.
4. Push the connector clamp assembly (with boot, if used) toward the connector body. Screw the clamp assembly onto the connector body, being careful not to disturb the wires.
5. To complete the assembly, attach the appropriate clamp with the screws provided and tighten.

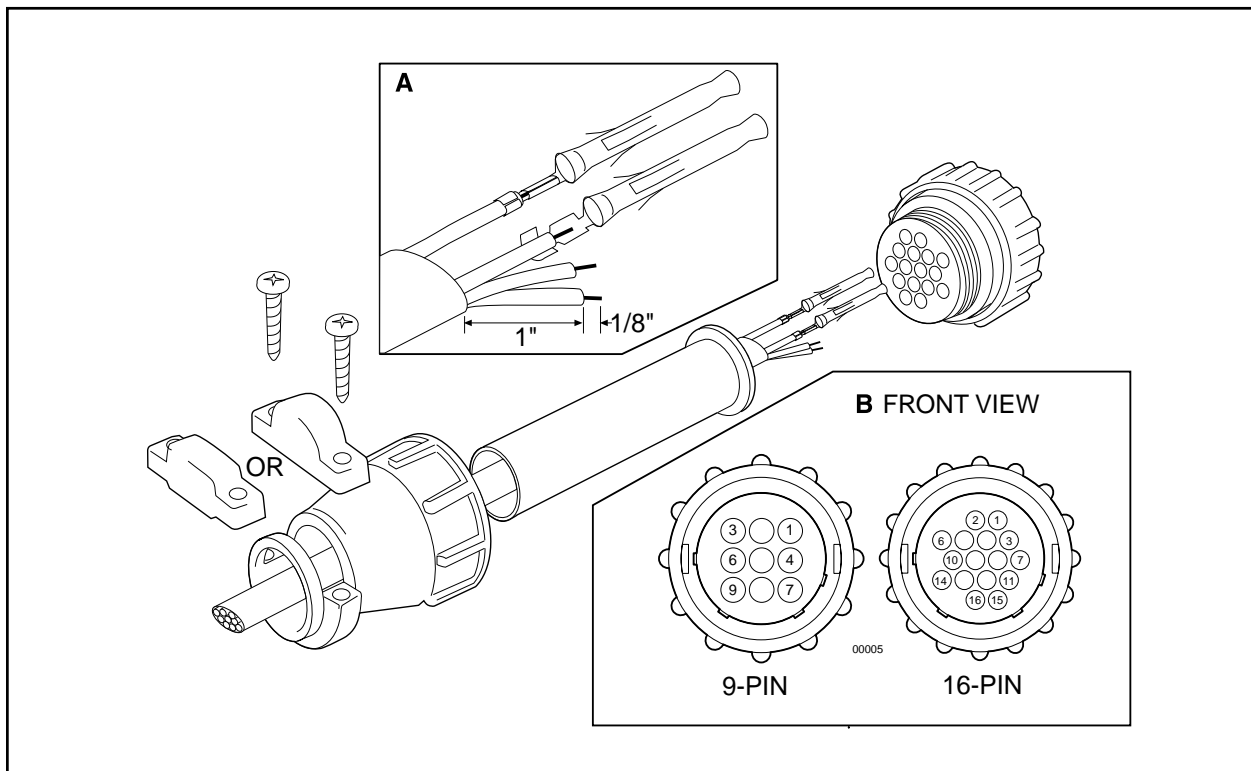


Figure 2. Connector Assembly

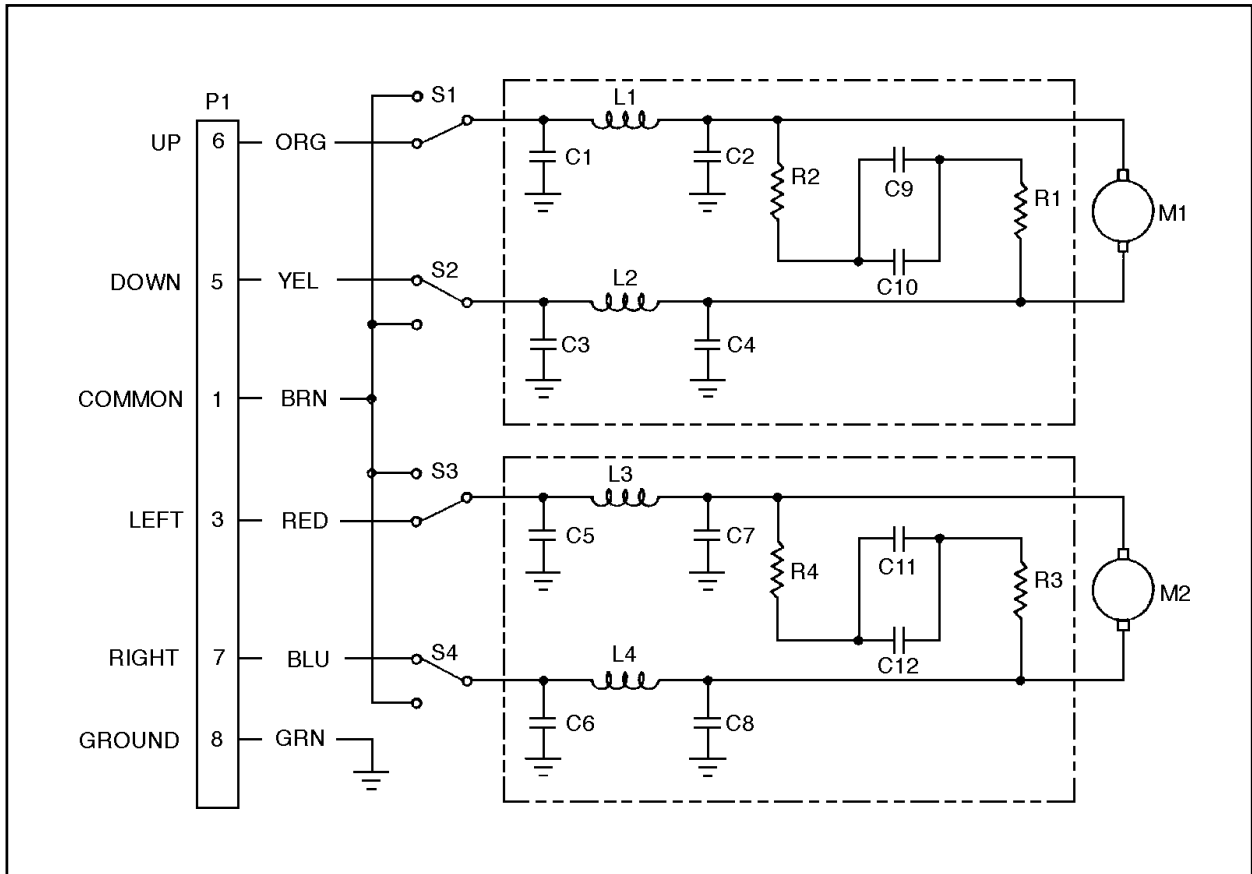


Figure 3. PT1250DC Wiring Diagram

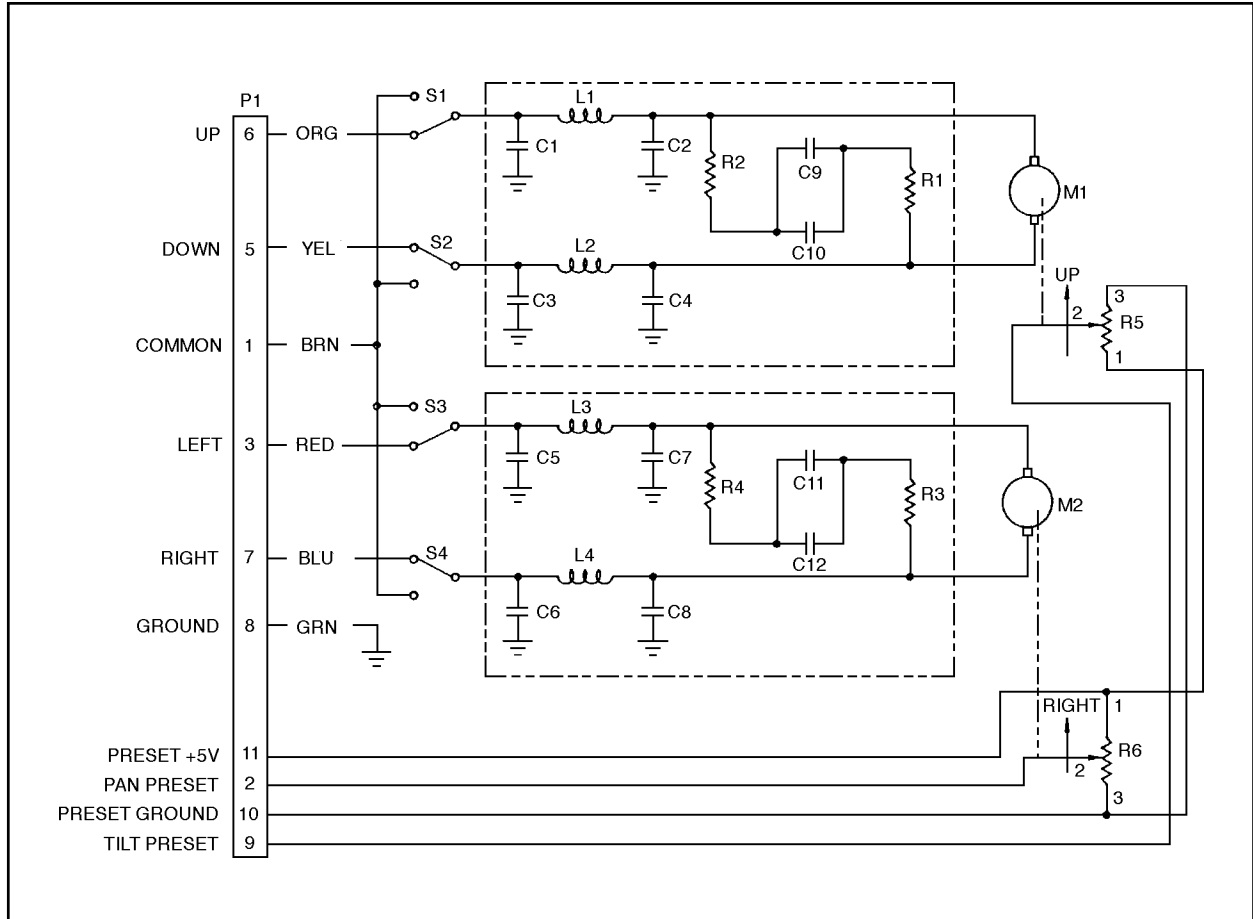


Figure 4. PT1250DC/PP Wiring Diagram

3.4 LIMIT STOP ADJUSTMENTS



WARNING: Do not operate the pan/tilt without limit stops.

Do not attempt to adjust the limit stops while the unit is operating. Personal injury or damage to the unit may result.

Do not remove or reposition the fixed limit stop on the pan/tilt. **DAMAGE WILL OCCUR.**

To set pan/tilt limit stops, perform the following steps. Refer to Figure 5.

1. Loosen the pan limit stops.
2. Turn the control unit on. Pan the unit to the right until the desired right pan limit is reached.
3. Move the right pan limit stop until it touches the pan limit switch actuator. Move the stop a slight distance further against the actuator until it clicks to indicate the opening of the limit switch. Lock the stop in place.
4. Pan the unit to the desired left position. Adjust the left pan limit stop as described in step 3.
5. Pan left and right to both limit stops and check for exact positioning. Tighten both stops securely.
6. Loosen the tilt limit stop screws and tilt the table, using the joystick, to the desired up position.
7. Move the up limit stop until it touches the tilt limit switch actuator and clicks. Lock the stop in place.
8. Tilt the table to the desired down position and set the stop in the same manner.
9. Tilt the table up and down and check for exact positioning. Tighten both stops securely.

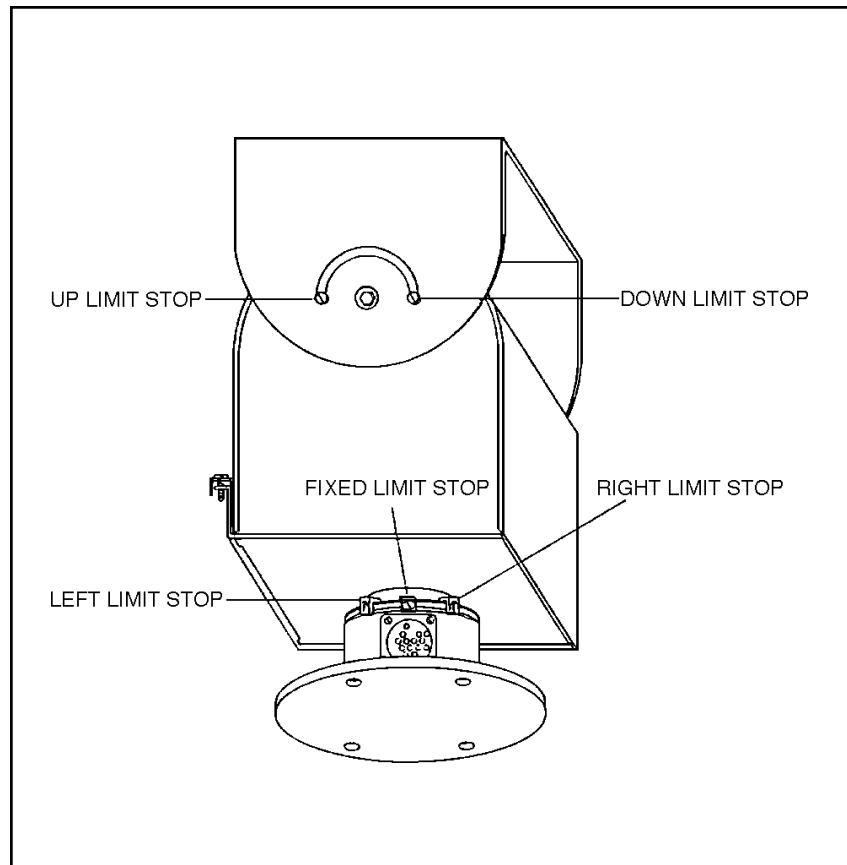


Figure 5. Limit Stops

4.0 OPERATION

| Refer to the manual for your control equipment for operating the pan/tilt.

5.0 TROUBLESHOOTING

Some common problems encountered with pan/tilt systems include miswiring, overloading, and not using the units for the correct application. If the pan/tilt unit fails to operate, do the following:

1. Check the fuse in the control unit. If the fuse is bad, replace it.
2. If the fuse blows after replacing it, check the control cable between the control unit and the pan/tilt for shorts, high resistance, or opens.
3. If the control cable is good, reconnect it to the control unit but not to the pan/tilt. Replace the fuse and operate the control unit. If the fuse blows again, the fault is in the control.

Refer to Figure 3 or 4 for the following steps.

4. If the control unit is good, check the wiring harness in the pan/tilt for shorts.
5. If the wiring harness is good, the problem is internal to the unit; consult the factory.

5.1 SERVICE MANUAL

If you need to service your unit, obtain a service manual in one of the following ways:

- Go to Pelco's web site at <http://www.pelco.com> and find service manual C373SM.
- Contact Pelco's Literature Department and request service manual C373SM.

6.0 MAINTENANCE

Inspect the pan/tilt unit every six months to ensure trouble-free operation and an extended product life. Harsh environments and/or continuous motion applications may require more frequent maintenance.

Please read all of the instructions that follow before servicing the pan/tilt.

To begin, remove the three screws on the front of the pan/tilt housing and lift the cover to gain access to the pan and tilt motor assemblies.

6.1 TIGHTENING DRIVE CHAINS

Check the pan and tilt drive chains for tension. A movement of 1/32 of an inch to 3/32 of an inch in the chains is acceptable. If the movement of a chain exceeds 3/32 of an inch, adjust the chain as follows:

1. Loosen the screws securing the motor to the mounting frame.
2. Pry on the motor to apply tension to the chain. Do not over-tension the drive chain.
3. Keep tension on the chain while tightening the screws.

6.2 CHAIN DRIVE LUBRICATION

Sprockets, chains, and gears should be well greased. If necessary, lubricate the pan and tilt gears, sprockets, and chains as follows with a high-quality grease capable of withstanding temperatures from -50° to 170°F (-46° to 77°C). Do the following:

1. Liberally apply grease to the pan and tilt gears, chains, and sprockets (refer to Figure 6).
2. Operate the pan and tilt motors to spread the grease across the parts.
3. Apply additional grease if necessary.
4. Reinstall the cover. If the pan/tilt is installed outdoors in an inverted position, apply RTV silicone sealant as shown in Figure 1.

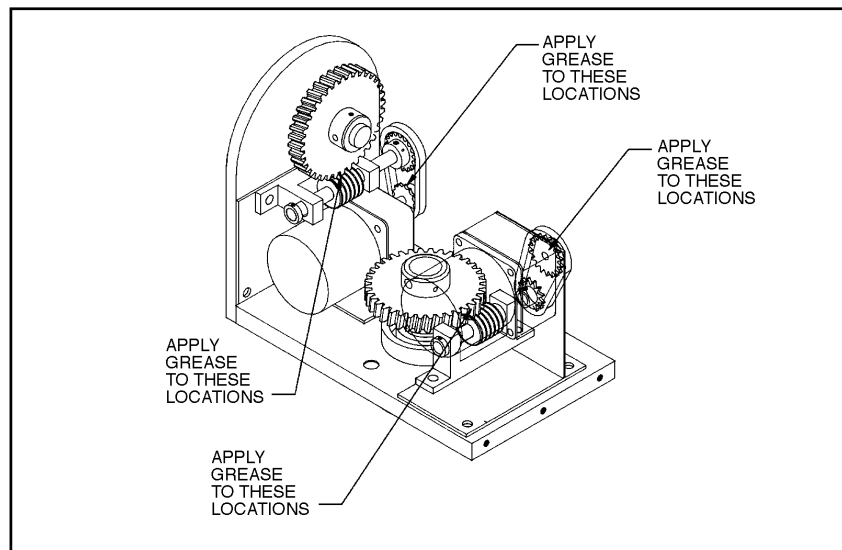


Figure 6. Servicing the Pan/Tilt

7.0 SPECIFICATIONS

MECHANICAL

Pan:	0-355° movement in horizontal plane
Speed	6°/sec ±1° (No load condition)
Torque	50ft/lb with specified voltage
Tilt:	±90° movement in vertical plane
Speed	3°/sec ± .5° (No load condition)
Torque	20 ft/lb with specified voltage
Maximum Load:	100 lb (45.4 kg) at 5 inches (12.7 cm) from tilt table surface to center of gravity
Gearing:	Adjustable worm-gear final drive to prevent drift and minimize backlash
Bearings:	
Pan	Heavy-duty ball bearings
Tilt	Oilite bronze bushing
Braking:	Dynamic for instantaneous stopping

ELECTRICAL

Input Voltage:	115 VDC required for pan/tilt
Power Requirements:	
Pan	Running: .30 amp (34 vA)
Tilt	.30 amp (34 vA)
Pan	Starting: .44 amp (51 vA)
Tilt	.44 amp (51 vA)
Connectors:	AMP CPC type (mate supplied)
Motors:	115 VDC permanent magnet
Limit Switches:	
Pan	5 amp
Tilt	5 amp External adjustment
Conductor Requirements:	6, unshielded (Functions: left, right, up, down, motor common, safety ground) (Variable speed, no additional conductors. For models with PP option, an additional 4 conductors are required.)

GENERAL

Environment: Indoor/outdoor; completely weatherproofed

Temperature: -10°F to 120°F (-23°C to 49°C)

Construction: Aluminum casting and plate

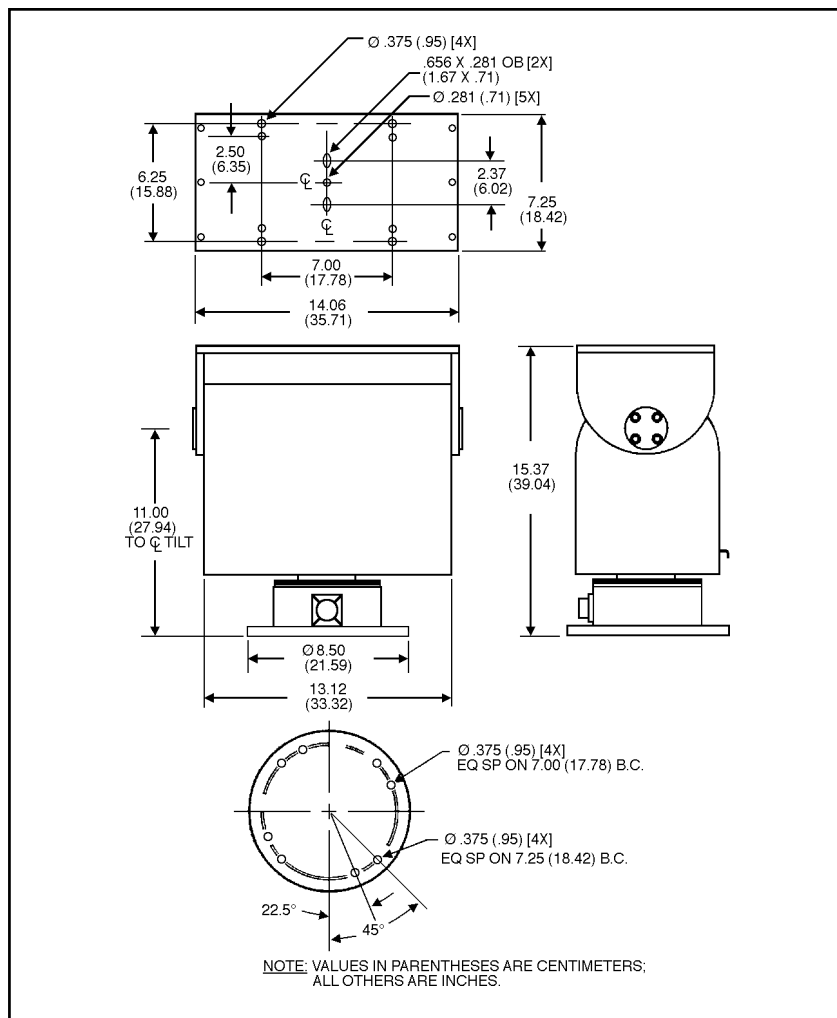
Finish: Gray polyester powder coat

Weight: 55 lb (25 kg)

Shipping Weight: 59 lb (26.72 kg)

Dimensions: See Figure 7

(Design and product specifications subject to change without notice.)



8.0 WARRANTY AND RETURN INFORMATION

WARRANTY

Pelco will repair or replace, without charge, any merchandise proved defective in material or workmanship for a period of one year after the date of shipment.

Exceptions to this warranty are as noted below:

- Five years on FT/FR8000 Series fiber optic products.
- Three years on Genex® Series products (multiplexers, server, and keyboard).
- Three years on Camclosure® and fixed camera models, except the CC3701H-2, CC3701H-2X, CC3751H-2, CC3651H-2X, MC3651H-2, and CC3651H-2X camera models, which have a five-year warranty.
- Two years on standard motorized or fixed focal length lenses.
- Two years on Legacy®, CM6700/CM6800/CM9700 Series matrix, and DF5/DF8 Series fixed dome products.
- Two years on Spectra®, Esprit®, ExSite™, and PS20 Scanners, including when used in continuous motion applications.
- Two years on Esprit® and WW5700 Series window wiper (excluding wiper blades).
- Eighteen months on DX Series digital video recorders, NVR300 Series network video recorders, and Endura™ Series distributed network-based video products. months on DX Series digital video recorders, NVR300 Series network video recorders, Endura™ Series distributed network-based video products, and TW3000 Series twisted pair transmission products.
- One year (except video heads) on video cassette recorders (VCRs). Video heads will be covered for a period of six months.
- Six months on all pan and tilts, scanners or preset lenses used in continuous motion applications (that is, preset scan, tour and auto scan modes).

Pelco will warrant all replacement parts and repairs for 90 days from the date of Pelco shipment. All goods requiring warranty repair shall be sent freight prepaid to Pelco, Clovis, California. Repairs made necessary by reason of misuse, alteration, normal wear, or accident are not covered under this warranty.

Pelco assumes no risk and shall be subject to no liability for damages or loss resulting from the specific use or application made of the Products. Pelco's liability for any claim, whether based on breach of contract, negligence, infringement of any rights of any party or product liability, relating to the Products shall not exceed the price paid by the Dealer to Pelco for such Products. In no event will Pelco be liable for any special, incidental or consequential damages (including loss of use, loss of profit and claims of third parties) however caused, whether by the negligence of Pelco or otherwise.

The above warranty provides the Dealer with specific legal rights. The Dealer may also have additional rights, which are subject to variation from state to state.

If a warranty repair is required, the Dealer must contact Pelco at (800) 289-9100 or (559) 292-1981 to obtain a Repair Authorization number (RA), and provide the following information:

1. Model and serial number
2. Date of shipment, P.O. number, Sales Order number, or Pelco invoice number
3. Details of the defect or problem

If there is a dispute regarding the warranty of a product which does not fall under the warranty conditions stated above, please include a written explanation with the product when returned.

Method of return shipment shall be the same or equal to the method by which the item was received by Pelco.

RETURNS

In order to expedite parts returned to the factory for repair or credit, please call the factory at (800) 289-9100 or (559) 292-1981 to obtain an authorization number (CA number if returned for credit, and RA number if returned for repair).

All merchandise returned for credit may be subject to a 20% restocking and refurbishing charge.

Goods returned for repair or credit should be clearly identified with the assigned CA or RA number and freight should be prepaid. Ship to the appropriate address below.

If you are located within the continental U.S., Alaska, Hawaii or Puerto Rico, send goods to:

Service Department
Pelco
3500 Pelco Way
Clovis, CA 93612-5699

If you are located outside the continental U.S., Alaska, Hawaii or Puerto Rico and are instructed to return goods to the USA, you may do one of the following:

If the goods are to be sent by a COURIER SERVICE, send the goods to:

Pelco
3500 Pelco Way
Clovis, CA 93612-5699 USA

If the goods are to be sent by a FREIGHT FORWARDER, send the goods to:

Pelco c/o Expeditors
473 Eccles Avenue
South San Francisco, CA 94080 USA
Phone: 650-737-1700
Fax: 650-737-0933