

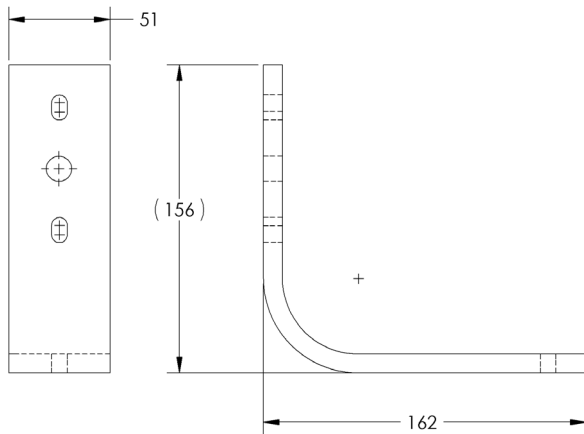
Key Features

- Simple Effective L-Bracket
- Made of thick flat-bar aluminum

Product Description

This heavy duty wall bracket is designed to fit small enclosures for tight locations. The pan-adjusted bolt on the underside can also be used to hang infrared illuminators such as Extreme CCTV's UF100 and UF500 models.

Technical Drawings



Specifications

Material	3/8" thick aluminum
Coating	Black (Standard) White (Optional)
Weight	1.2 lbs (0.55 kg)
Maximum Load	25 lbs (11.4 kg)

Product Image



Left ←: EX27 camera / UF500 infrared over / under arrangement.

Camera:
EX27SX800 LXR
Wall Bracket:
EXMB.020
Infrared Illuminator: UF500



Left ←: EX26NX camera with U-bracket support.

Camera:
EX26NX Night Vision
Wall Bracket:
EXMB.020

Notes:

1. Wall mount anchors not included.
2. Double-U Pan/Tilt mount is equipped with Ex27 cameras.
3. Large U-bracket shown is equipped with the UF500.
4. Small U-bracket shown is equipped with EX26 cameras.

Dealer / Distributor



Corporate Headquarters
Extreme CCTV Inc
 TF: 1 888 409 2288
 T: +1 604 420 7711
 F: +1 604 420 3300
 E: Sales@ExtremeCCTV.com
 www.ExtremeCCTV.com



European Operation
Derwent Systems Ltd
 A Division of Extreme CCTV (UK) Ltd
 T: +44 (0) 1670 730 187
 F: +44 (0) 1670 730 188
 E: SalesUK@DerwentCCTV.com
 www.DerwentCCTV.com