

ZX20 Ballistic Cameras for Airport Surveillance

The *Aéroport International Toussaint Louverture* at Port-au-Prince in Haiti uses Extreme's ZX20 Ballistic camera for critical airport surveillance. The ZX20 was selected for its super-tough, bullet-proof construction which makes it resistant to gunfire.

"I've seen equipment utterly destroyed by vandals throughout my +20 years in airport security. So we needed Level 6 performance for maximum protection."

Gael Painson, President & CEO, Secur-I-T s.a.
Port-au-Prince, Haiti

"The ZX20 was the only camera that was tough enough to meet our requirements."

Jean-Bernard Riboul, COO, Secur-I-T s.a.
Port-au-Prince, Haiti



Extreme's ZX20 features double-walled construction that allows it to help neutralize bullet forces without any effect to its operation. Its dual-layer steel exterior is designed to exceed UL752 Level 6 Ballistic.



Delmas A1 Port-au-Prince, Haiti
Tel: 1.509.222.1140 E-mail: info@secur-i-t.com

Problem

Airport Lacked Effective Outdoor Surveillance

- Conventional cameras destroyed by sabotage and vandalism
- UL 752 Level 6 Ballistic performance required for severity of potential future attacks
- Lack of surveillance in the most sensitive areas, indoor and outdoor
- Airport security compromised

Solution

Extreme's ZX20 Ballistic Camera Tested for Bullet-Proof Performance

- Double-walled construction using 1026 Cold Drawn High-Strength Steel
- Steel exterior designed to exceed UL 752 Level 6 Ballistic
- Inter-wall air-gap helps neutralizes destructive bullet forces
- Four-layered, 1.25" ballistic window ensures bullet-proof frontal protection and high optical clarity
- Effective bullet-proof surveillance

Results

Extreme Surveillance Improves Airport Security

- Critical video vigilance upheld
- 24/7 security when combined with infrared illumination
- Strong crime deterrent
- Increased protection from terrorist activity
- Improved airport security

Related Documents

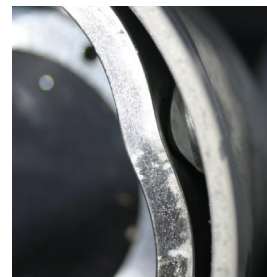
- [Actual ballistic test footage from FPED V](#)
- [ZX20 tech sheet](#)
- [ZX22 tech sheet](#)
- [Extreme Secures Naval Facility](#)

For further info on how Extreme CCTV products can benefit your next security project, please contact: Toll Free (NA): 1-888-409-2288 or Sales@ExtremeCCTV.com.

Specifications are subject to change without notice

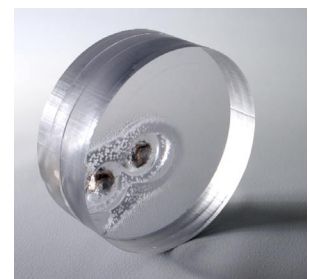


Testing at FPED 2005 at Marine Base Quantico in Virginia. The ZX20s delivered uninterrupted video surveillance in the face of US Marine gunfire attack.



Above:
High calibre 7.62mm and 5.56mm bullets do not penetrate the two layers of 1026 Cold Drawn High Strength steel.

Right:
1.25" Lexgard™ absorbs 9mm gunfire while allowing continuous video surveillance.



ZX20-Airport-surveillance-casestudy